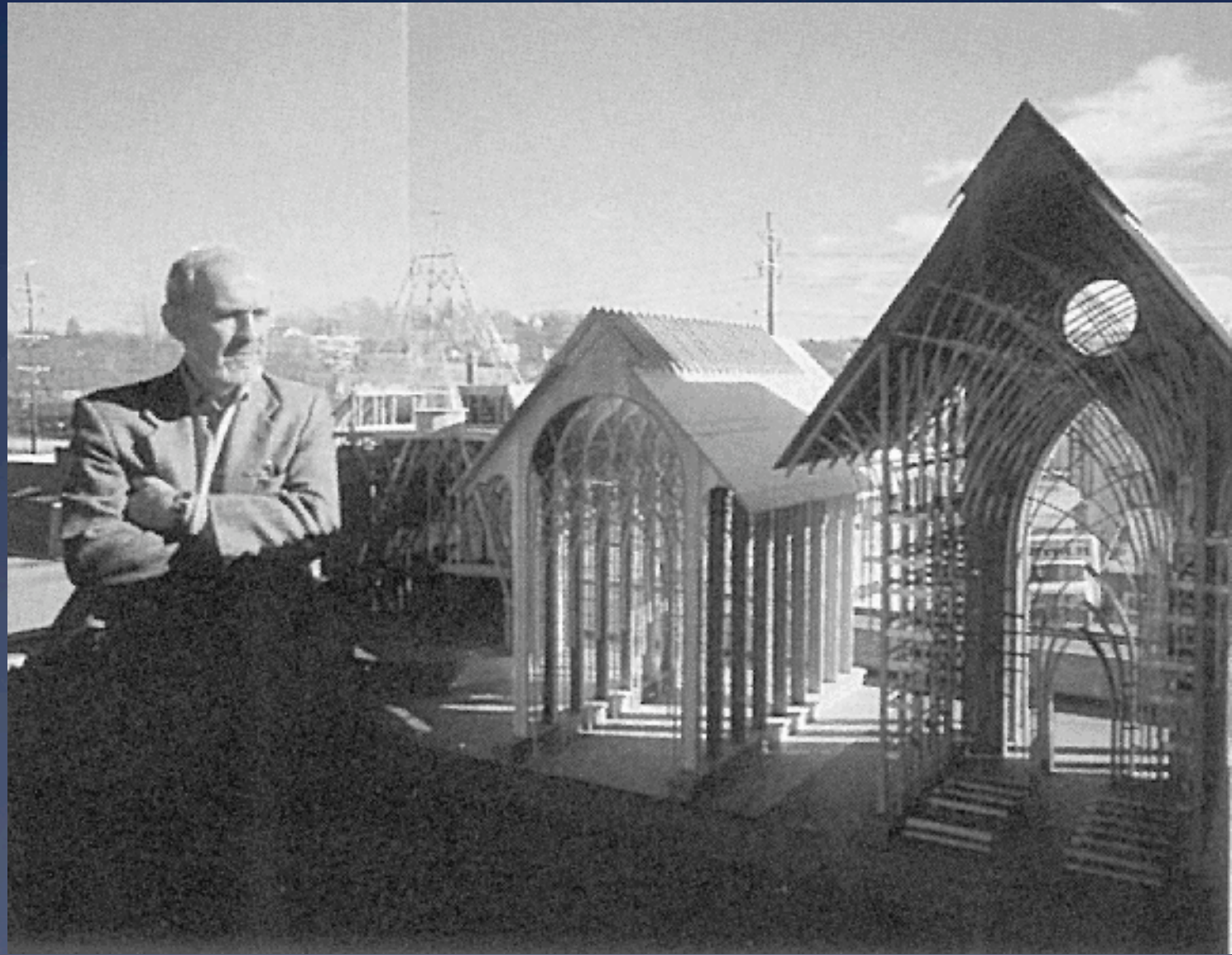
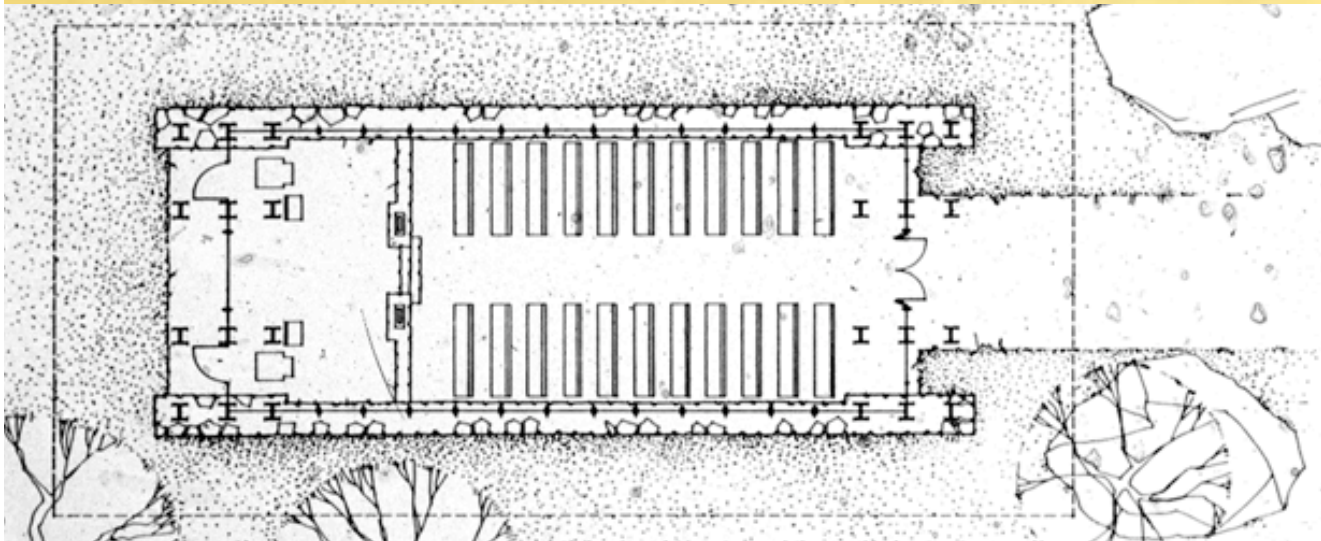
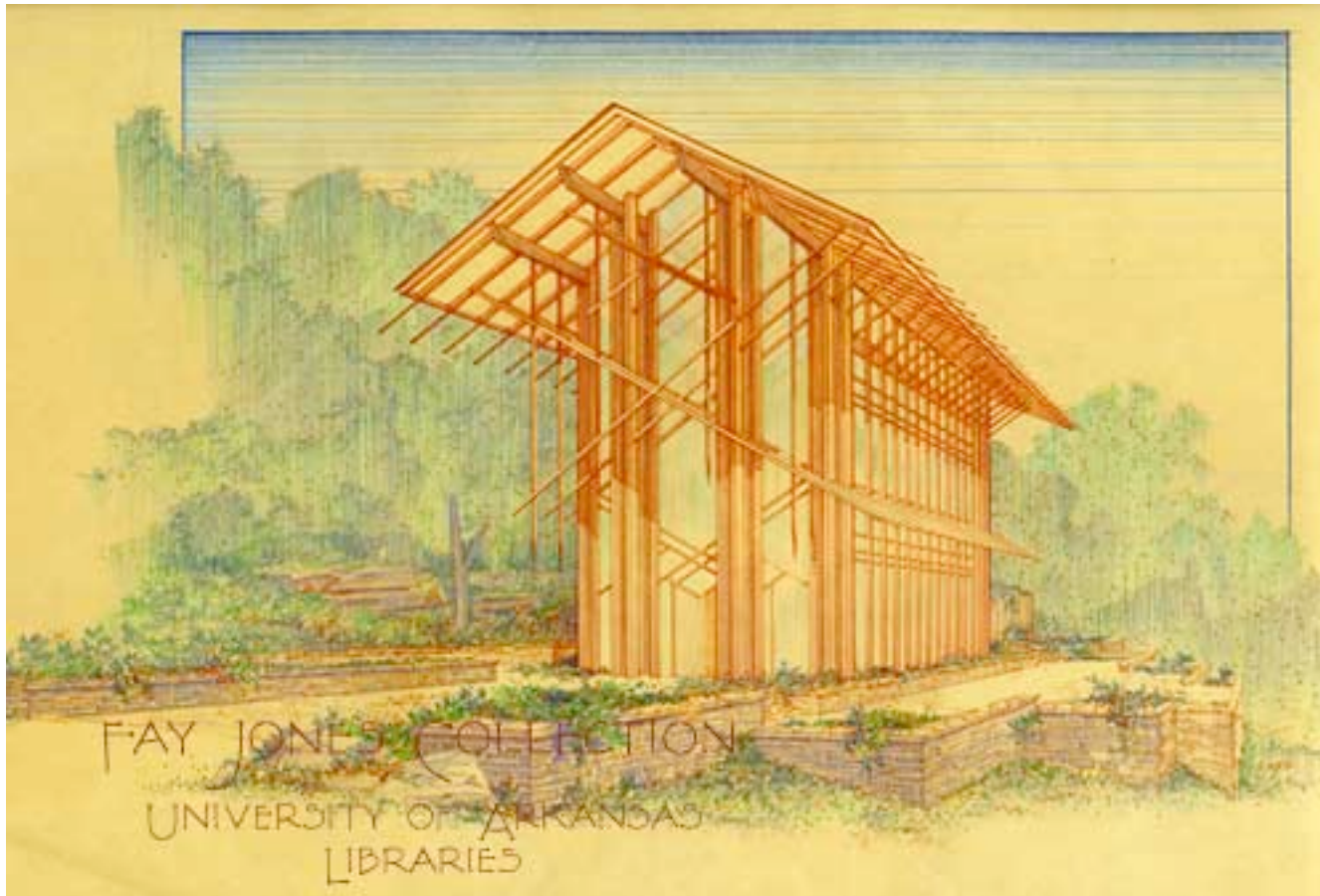


# Structure as Sticks

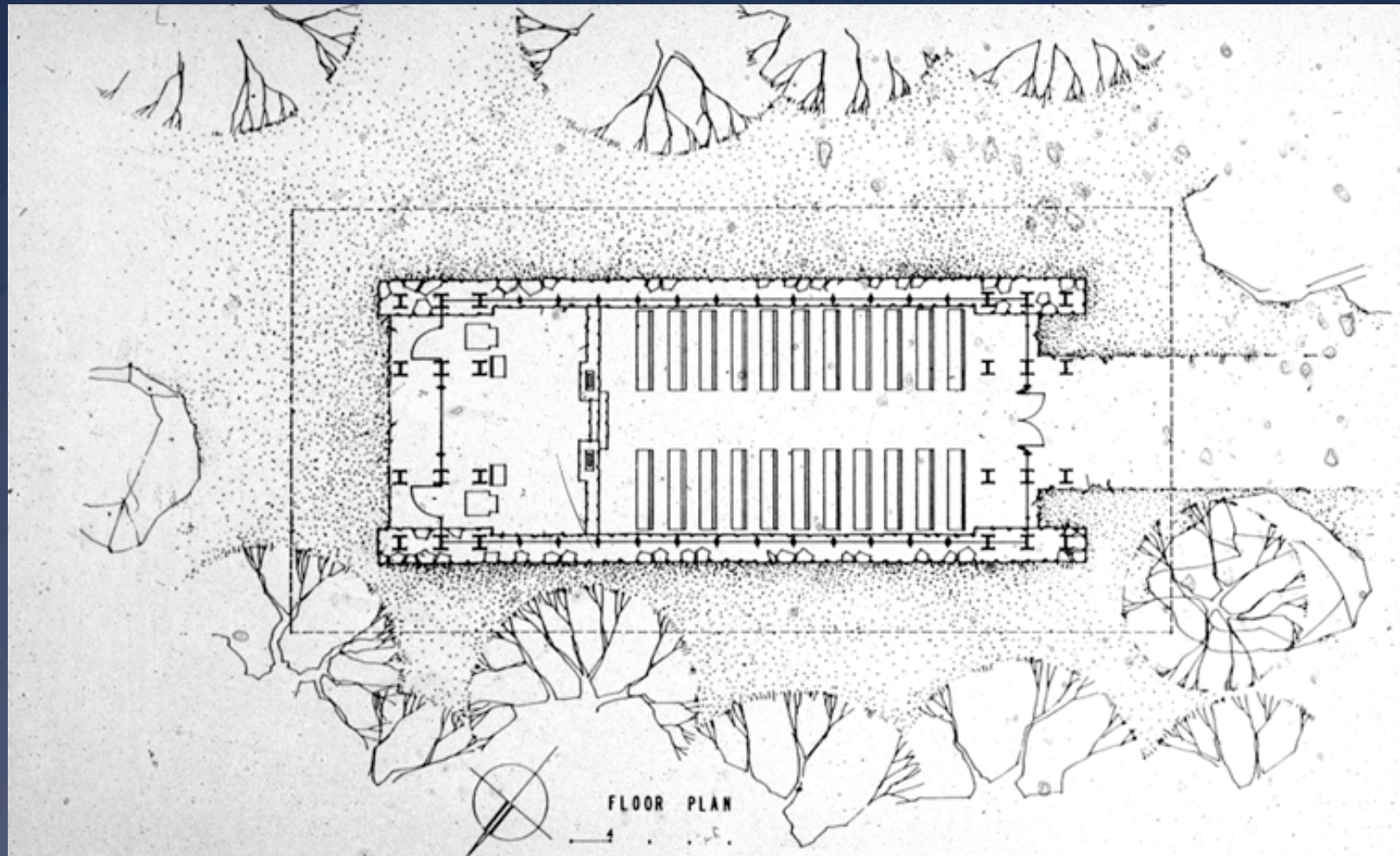
Thorncrown Chapel, 1980  
Eureka Springs, Arkansas  
E. Fay Jones, Architect



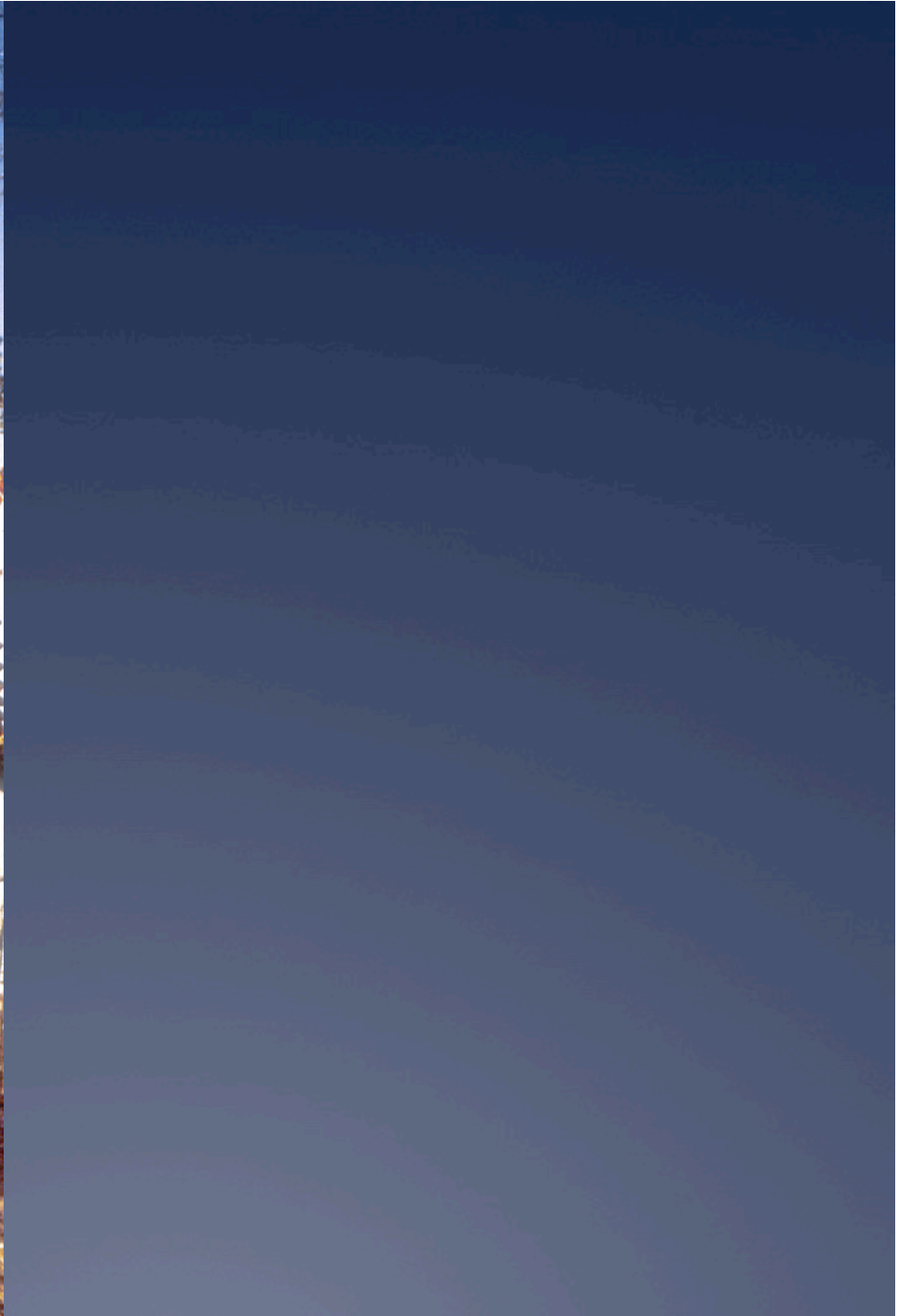




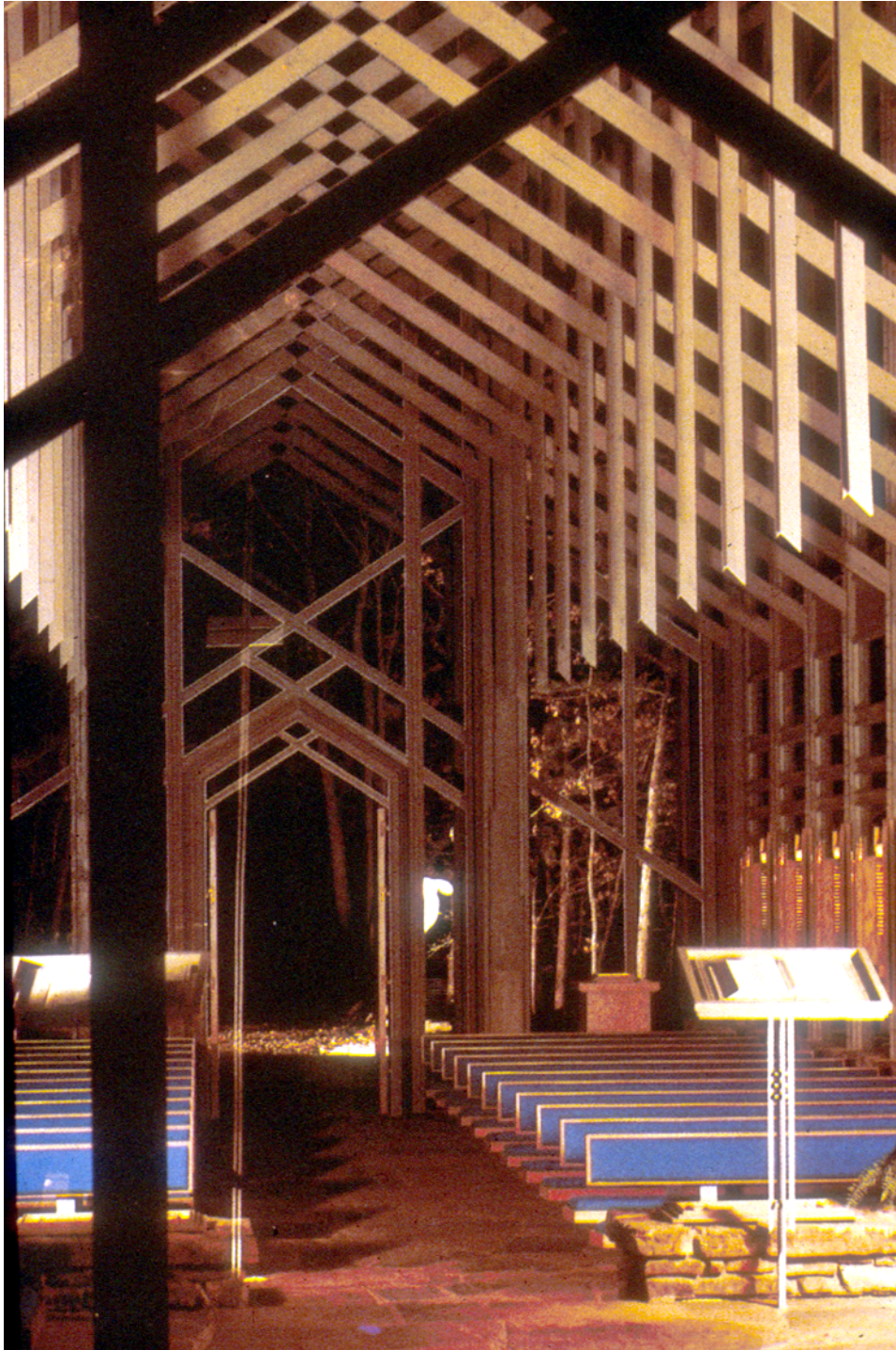
A “dumb” plan the sophistication, the architecture, the presenence is in the fabric of the building... not its plan shape



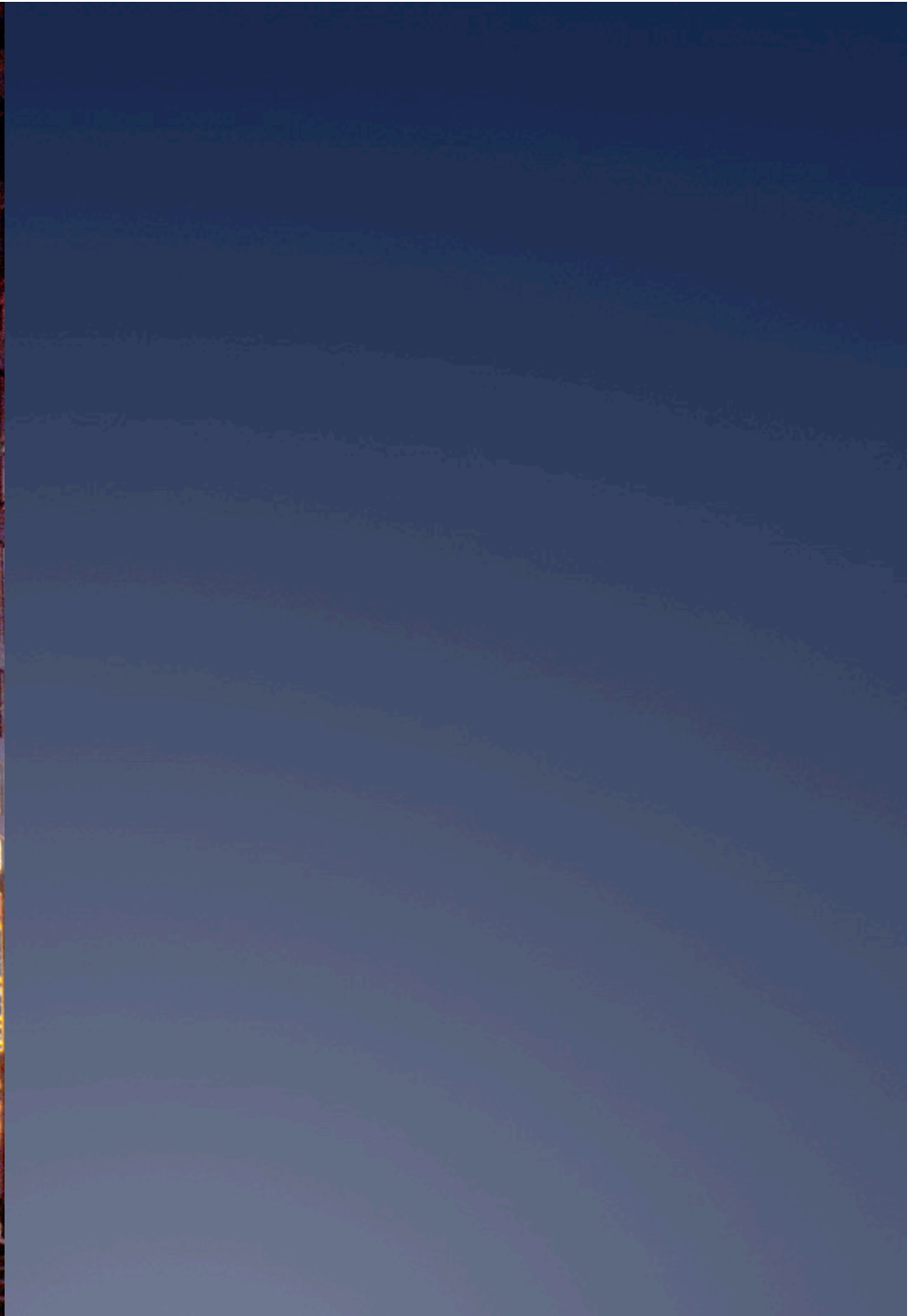








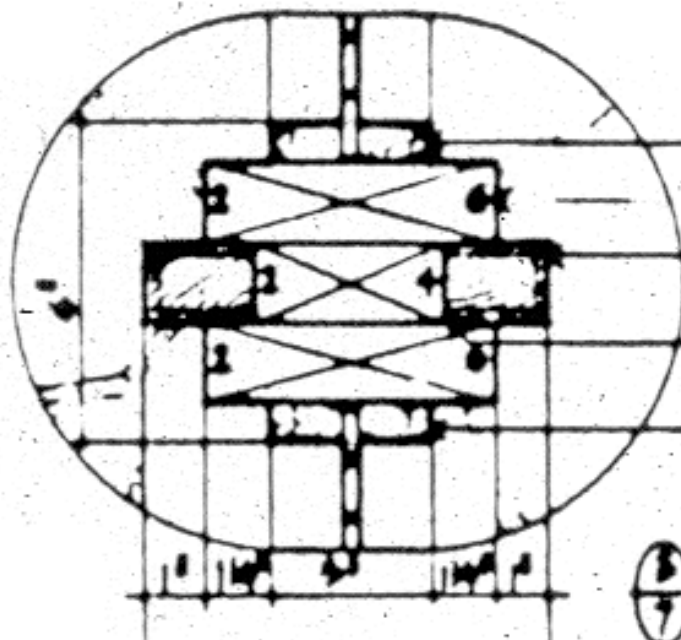
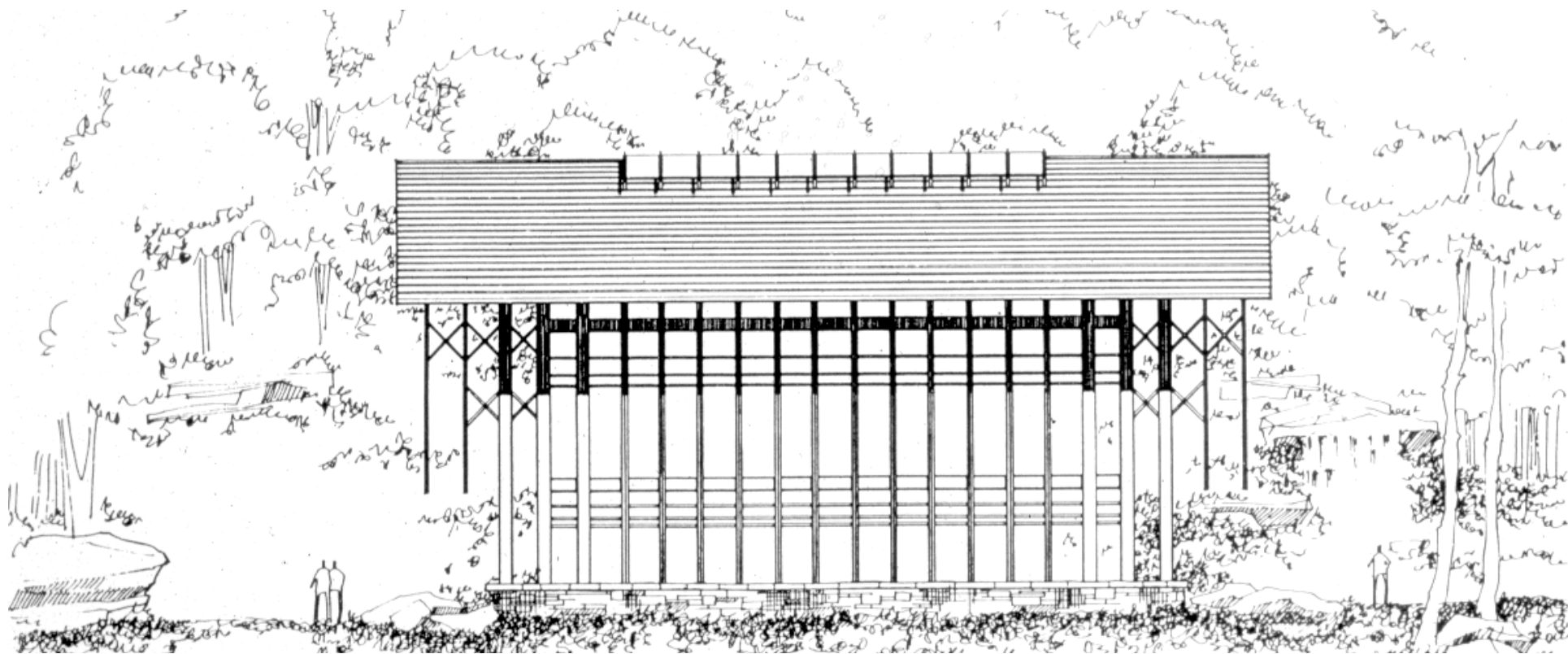












TYPICAL FINISH

2x6 FINE

1" x 1/2" FINE 1/4" x 1/2" x 1/2"

INSULATION TO ALLOW DRAINAGE

1/4" x 1/2" FINE

1/2" GLASS

STRUCTURAL MULLION

SCALE 1" = 1'-0"



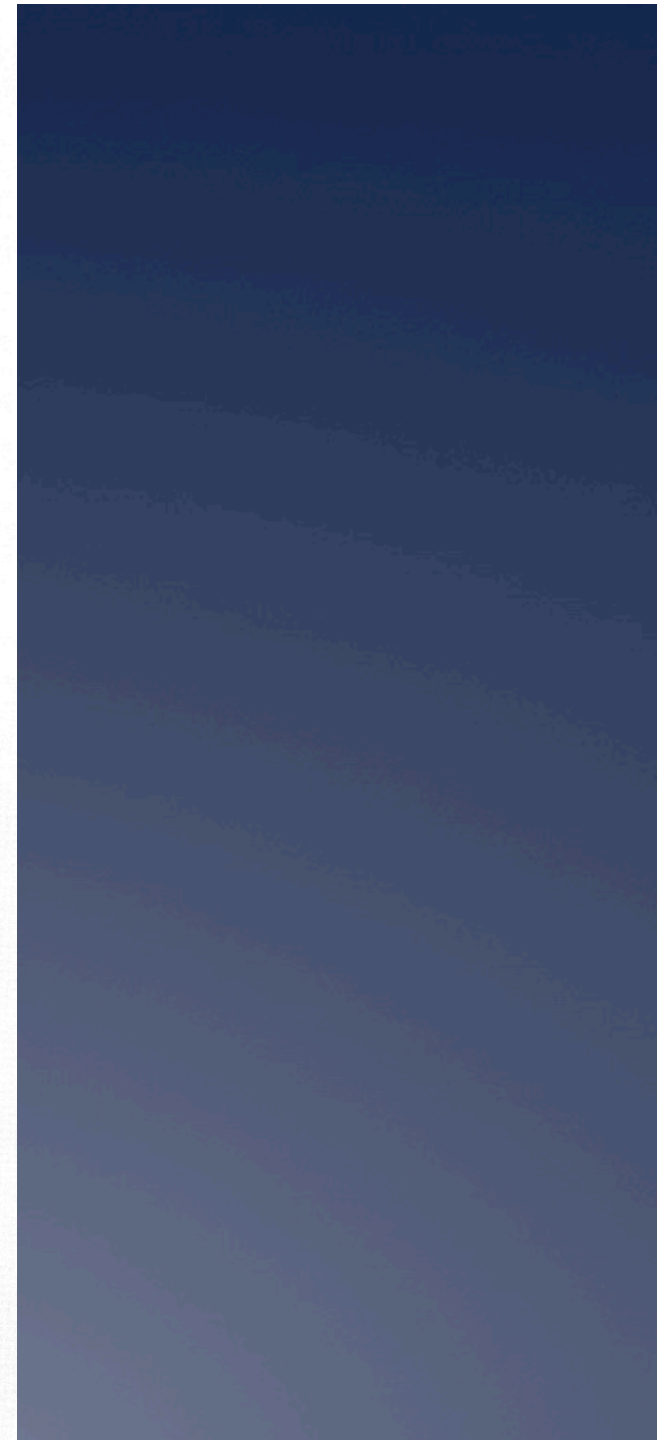
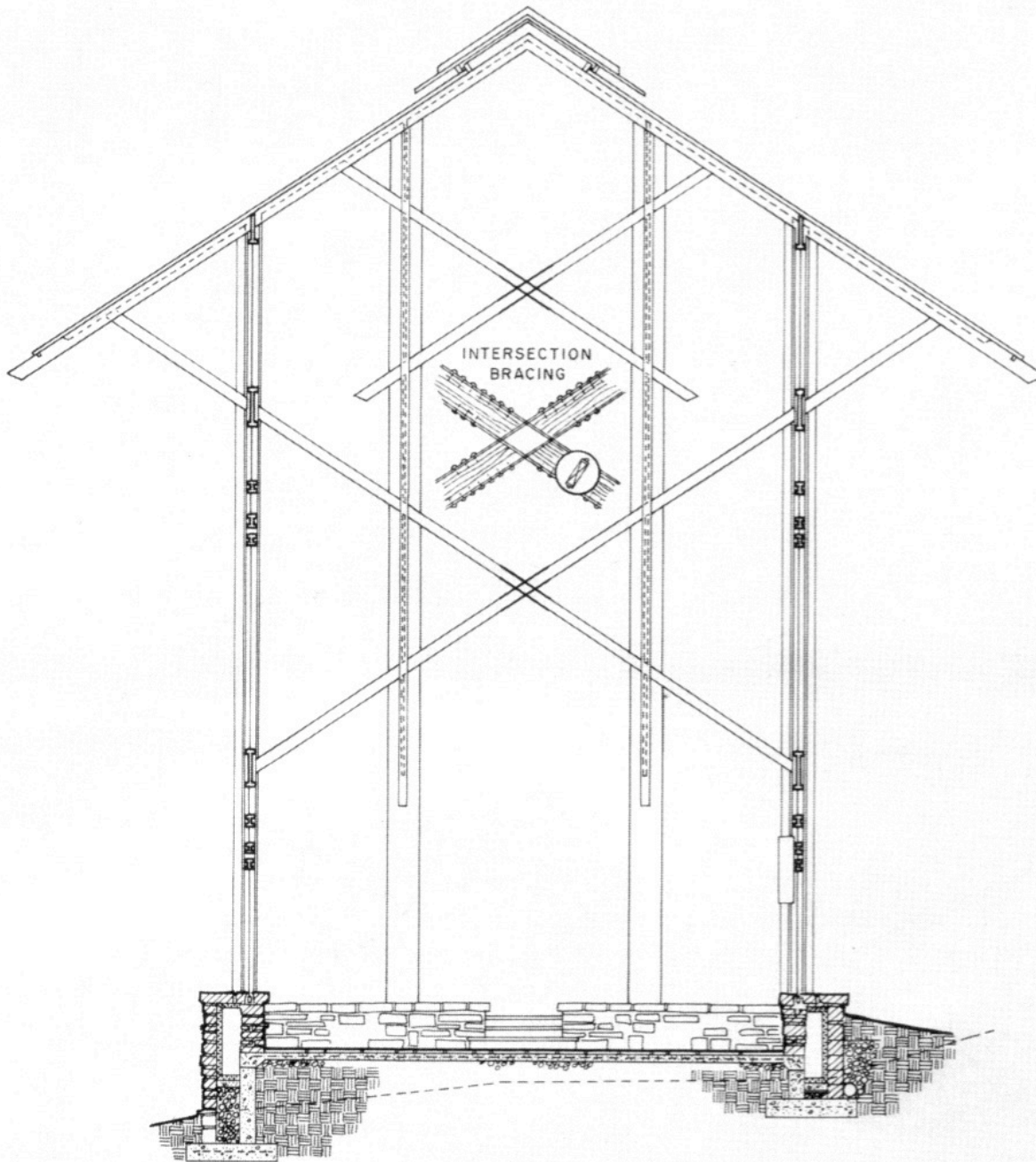






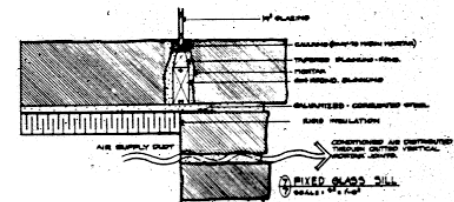
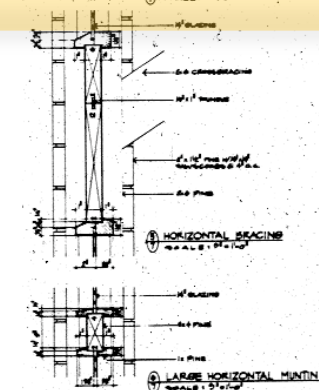
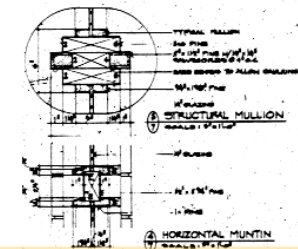
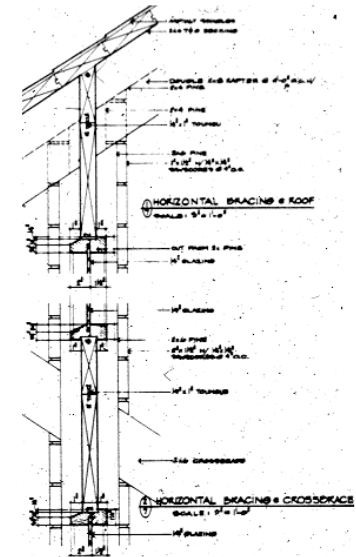
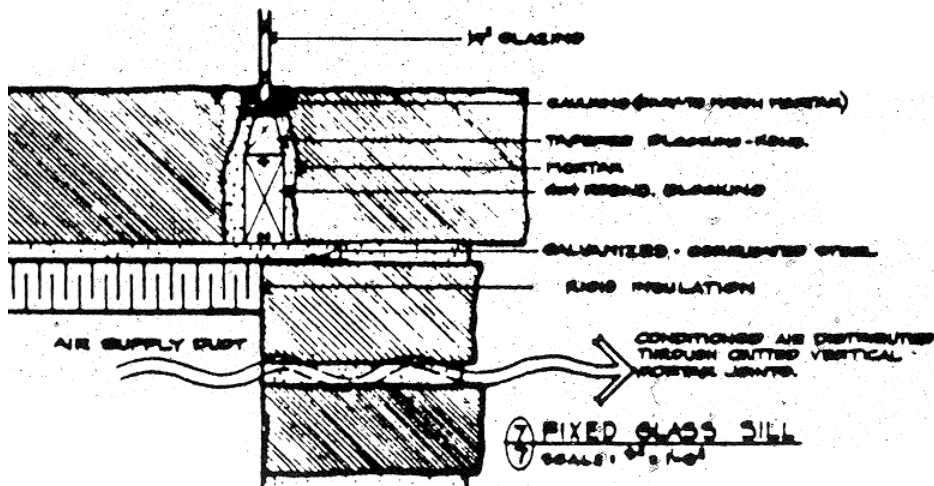
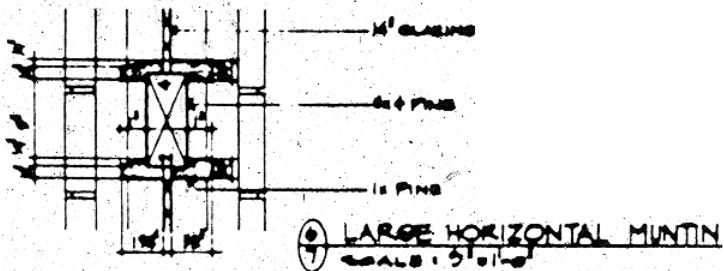
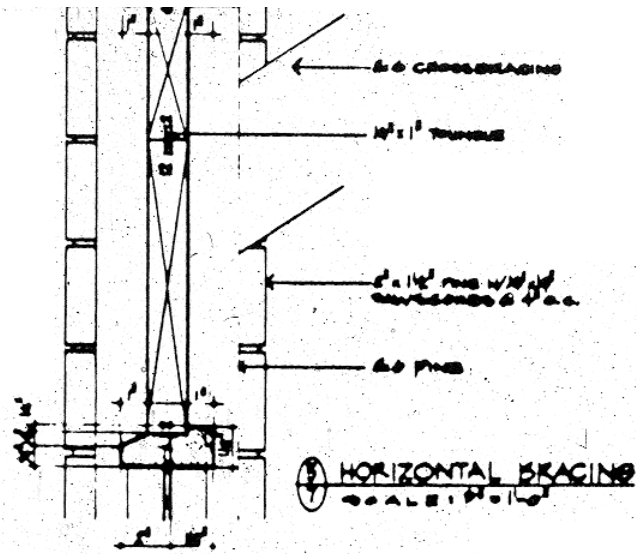




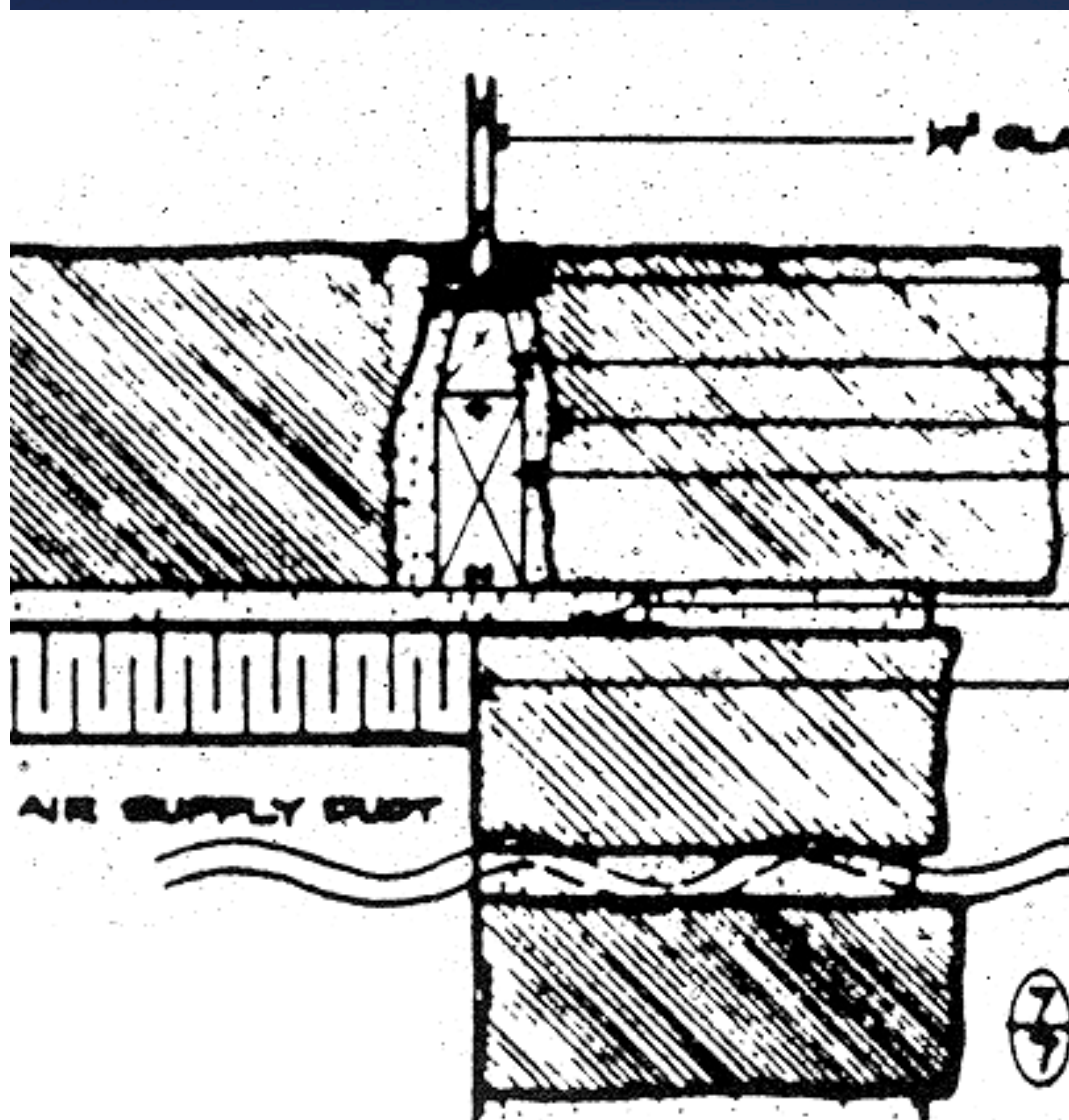


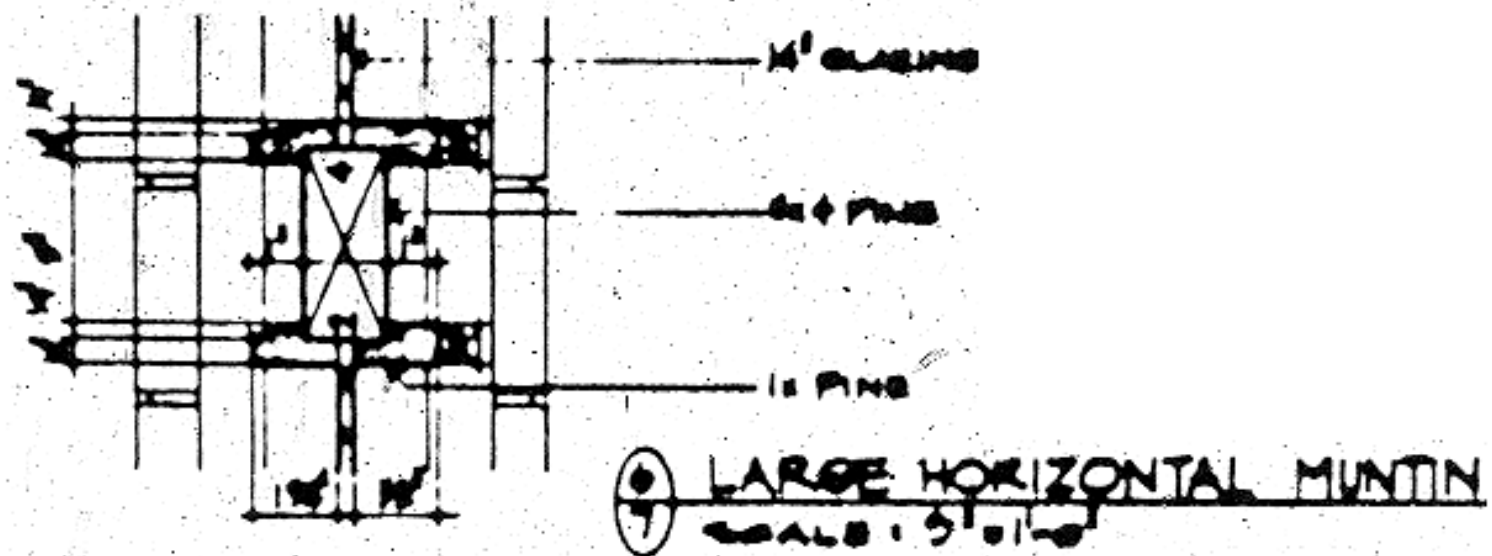
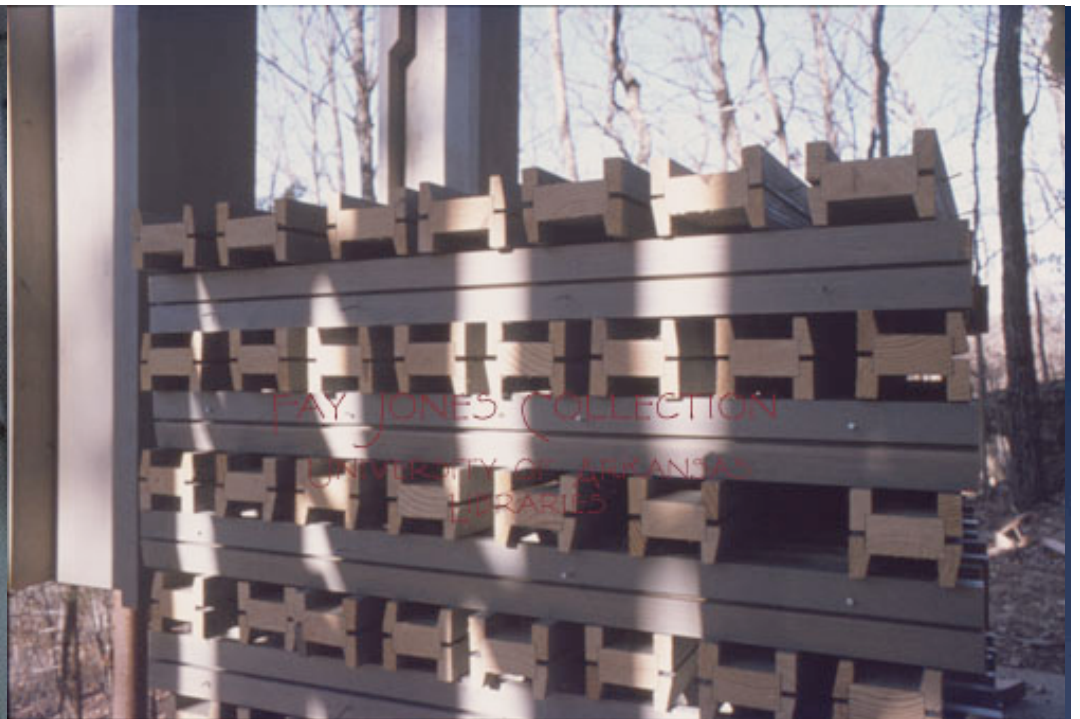












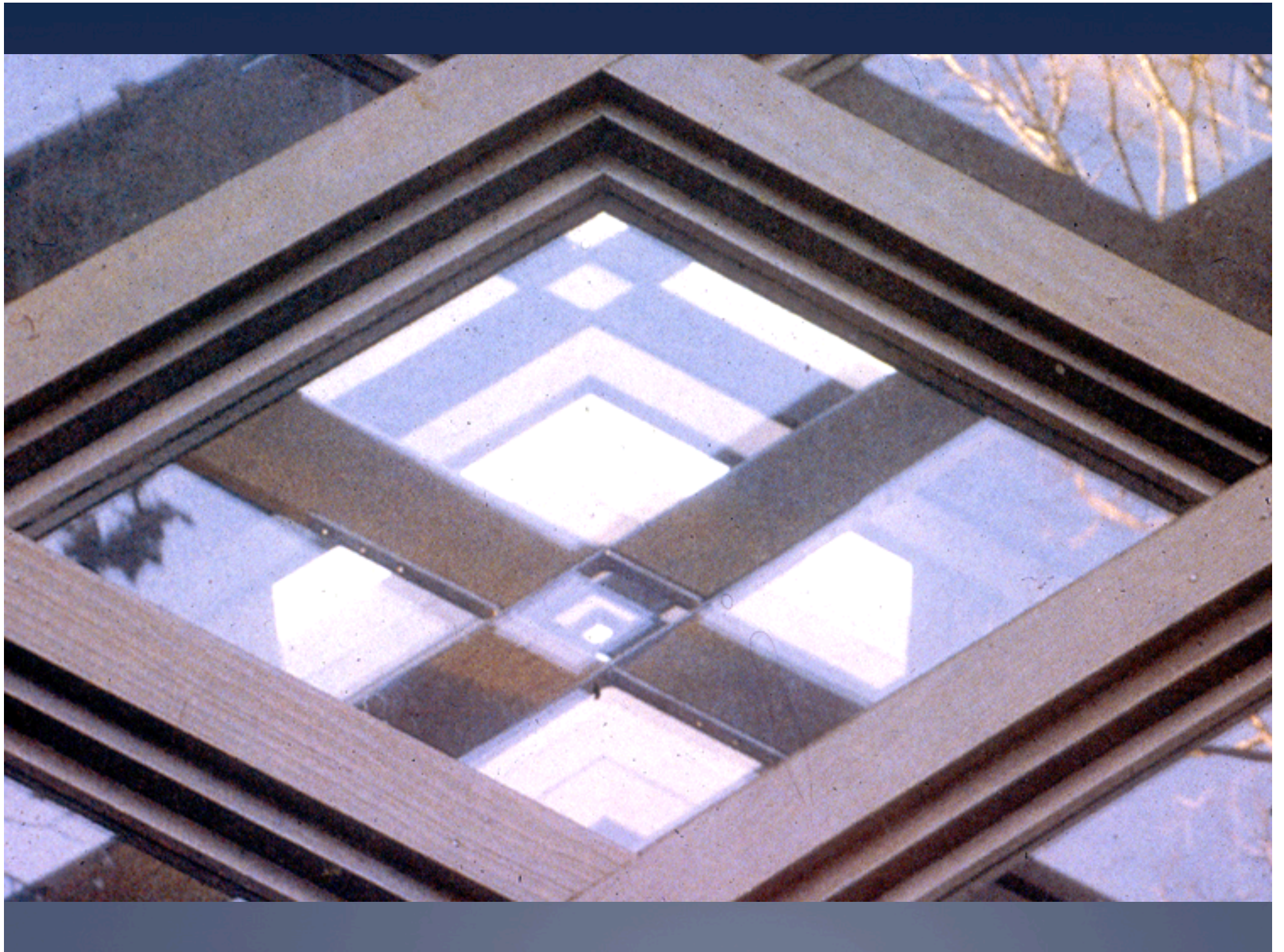




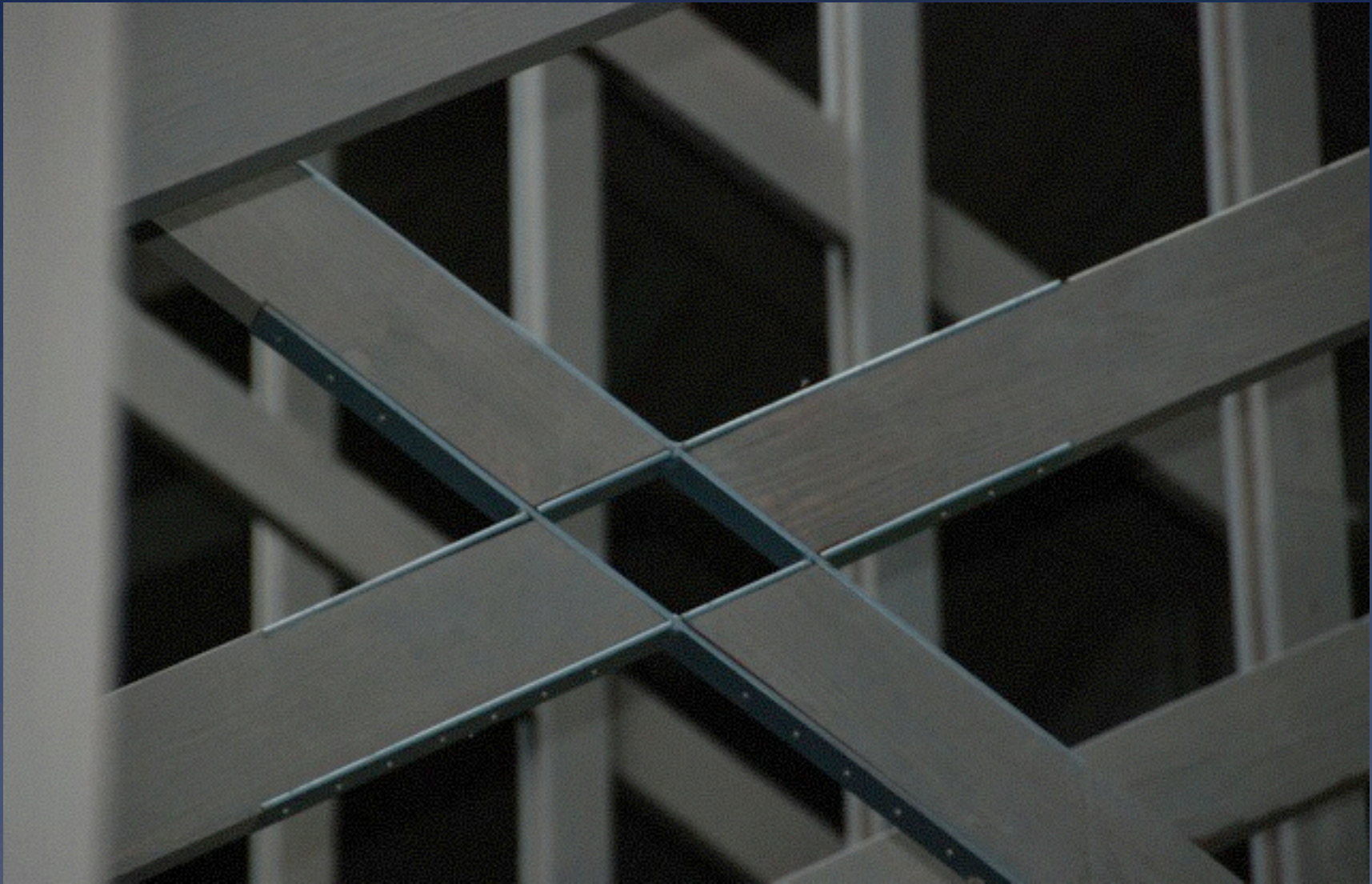




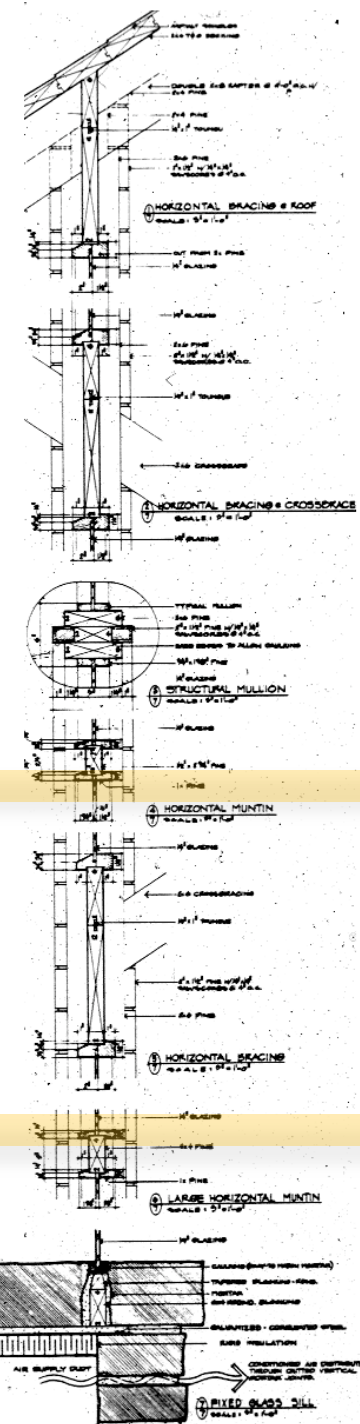
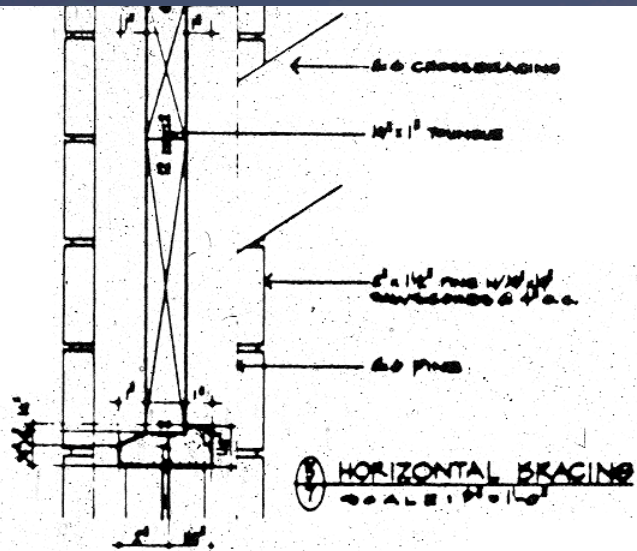


























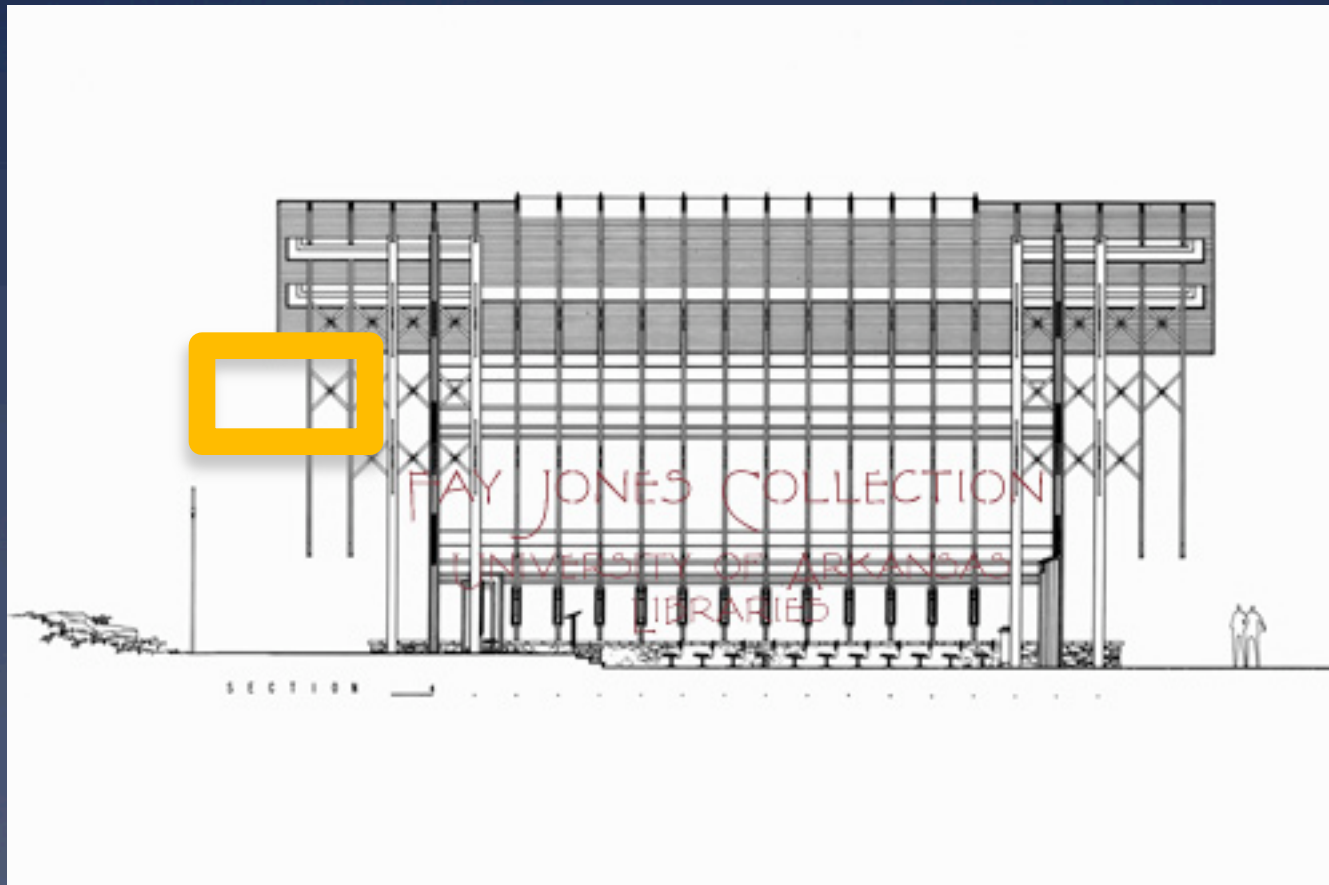


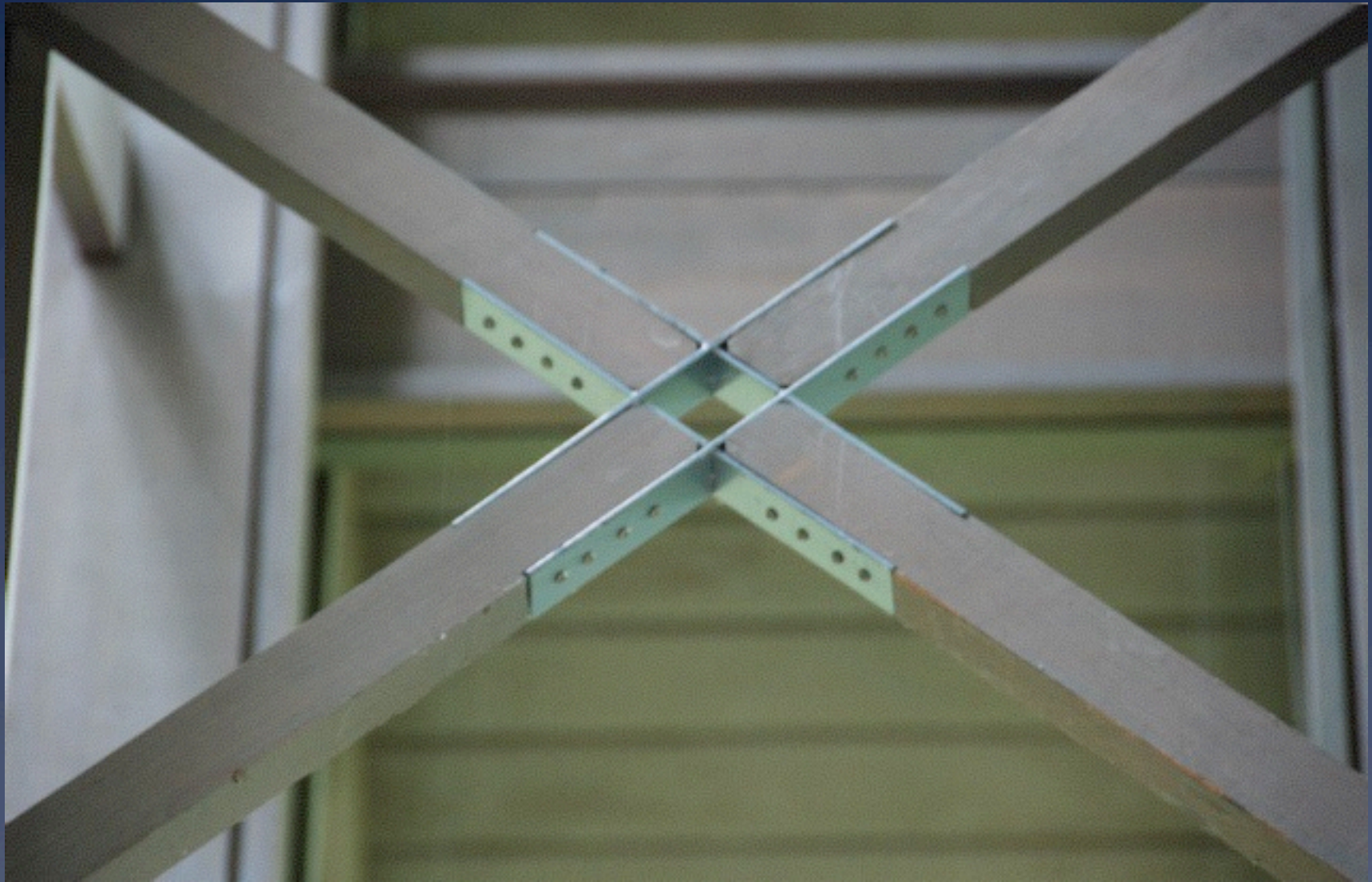






























FAY JONES COLLECTION  
UNIVERSITY OF ARKANSAS  
LIBRARIES



PAY JONES COLLECTION  
UNIVERSITY OF ALABAMA  
LIBRARY















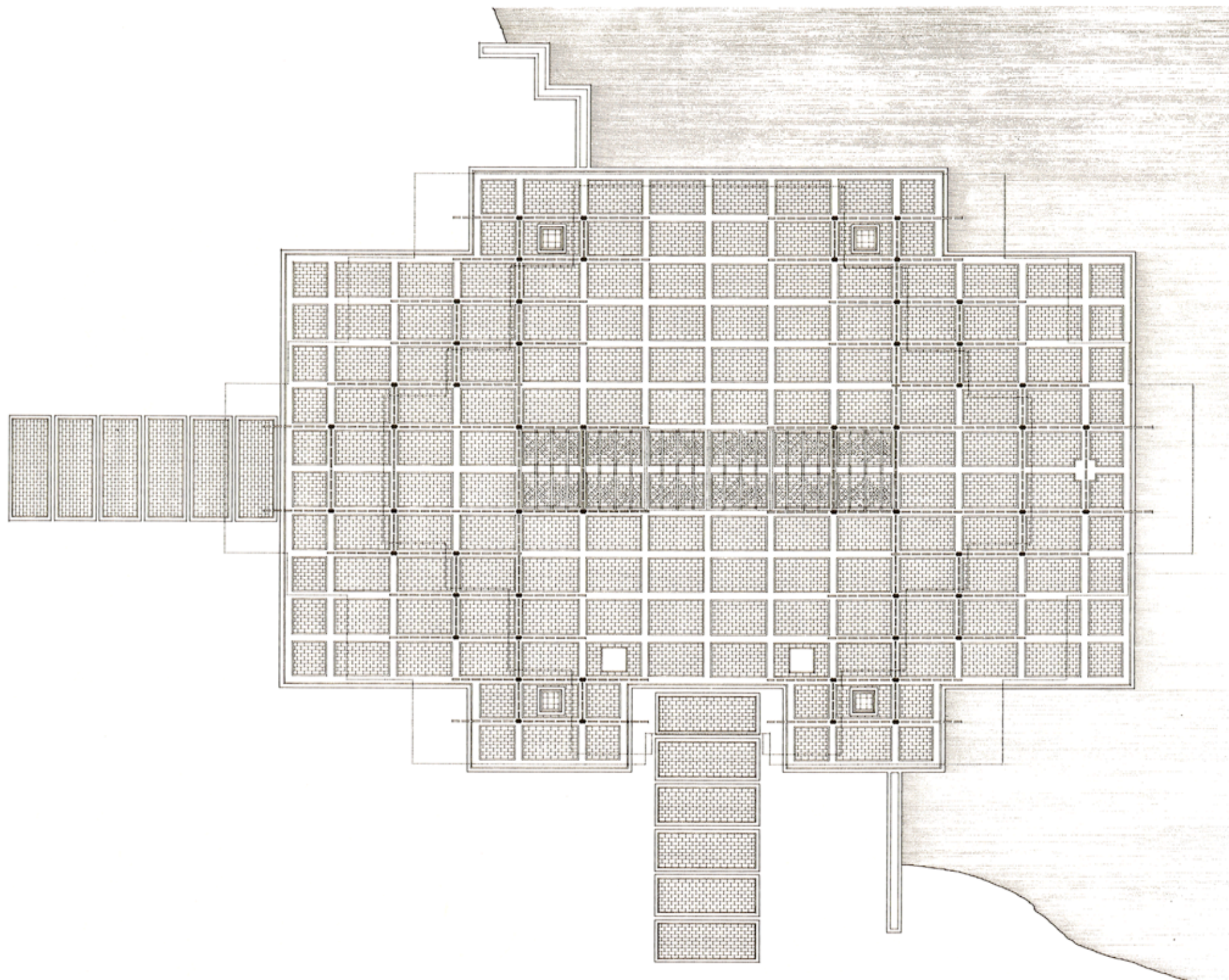
Pinecote Pavillion  
Crosby Arboretum  
Picayune, Mississippi

1987 Fay Jones

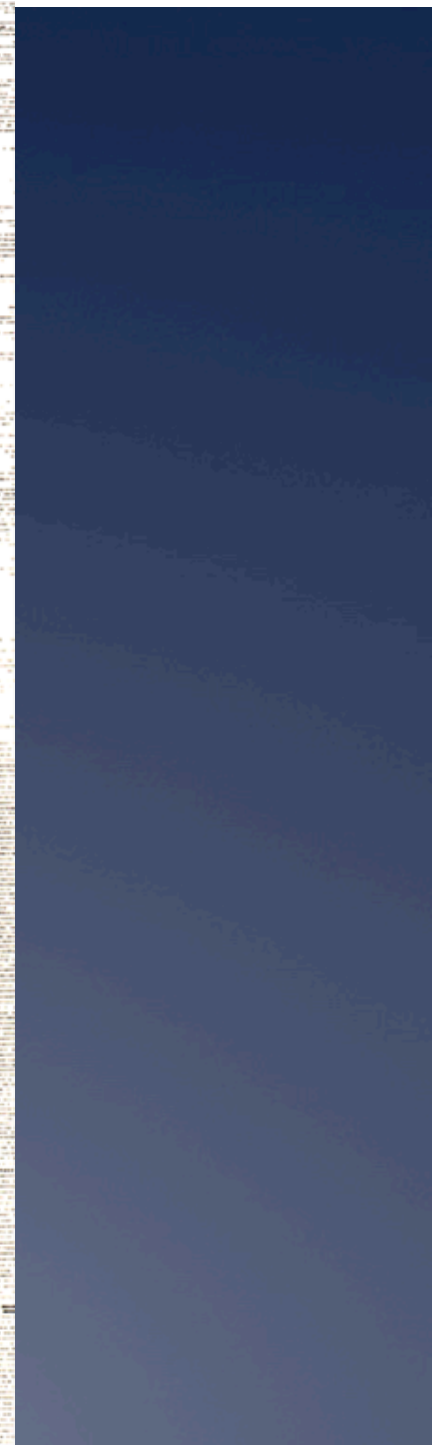
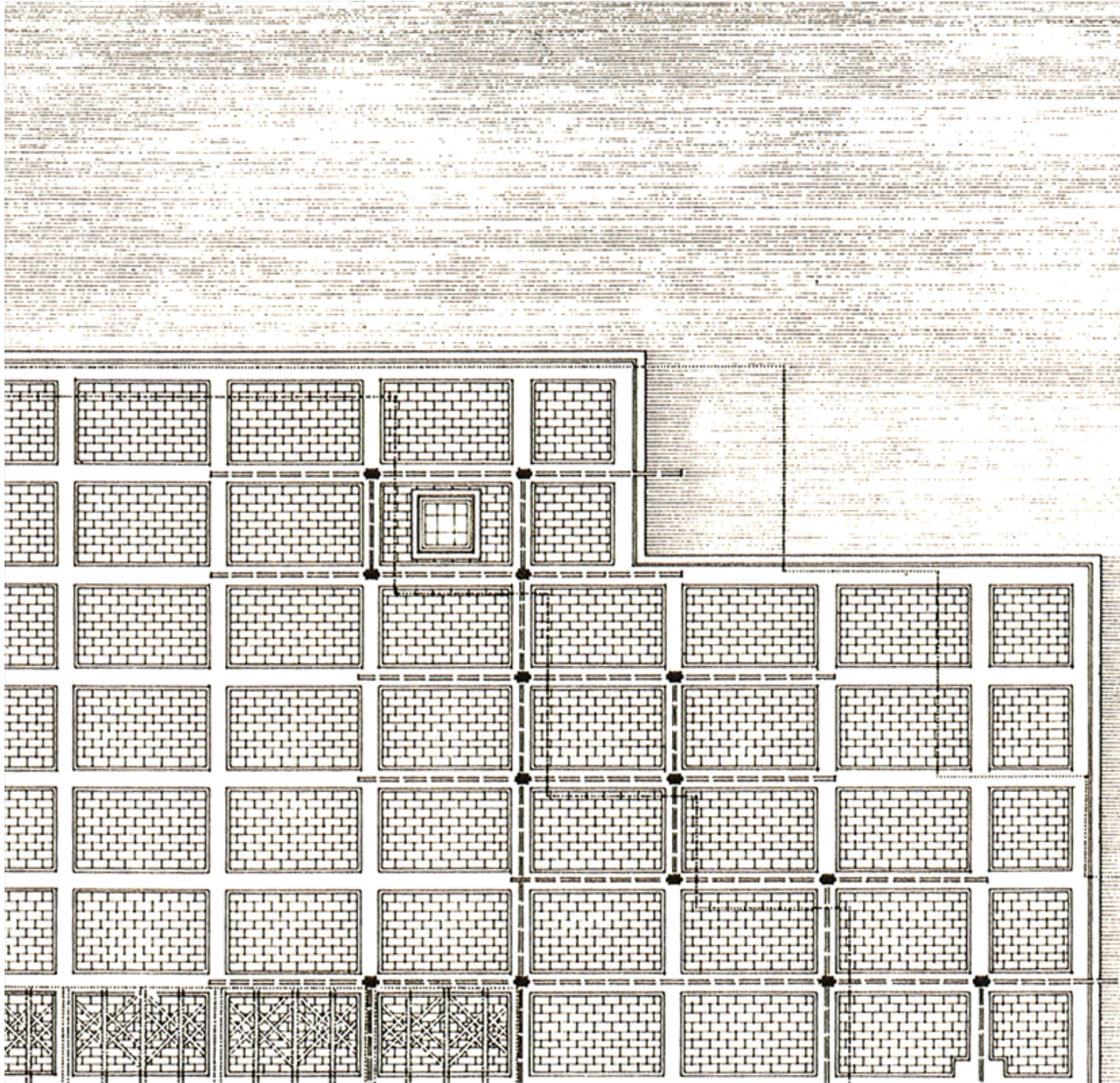












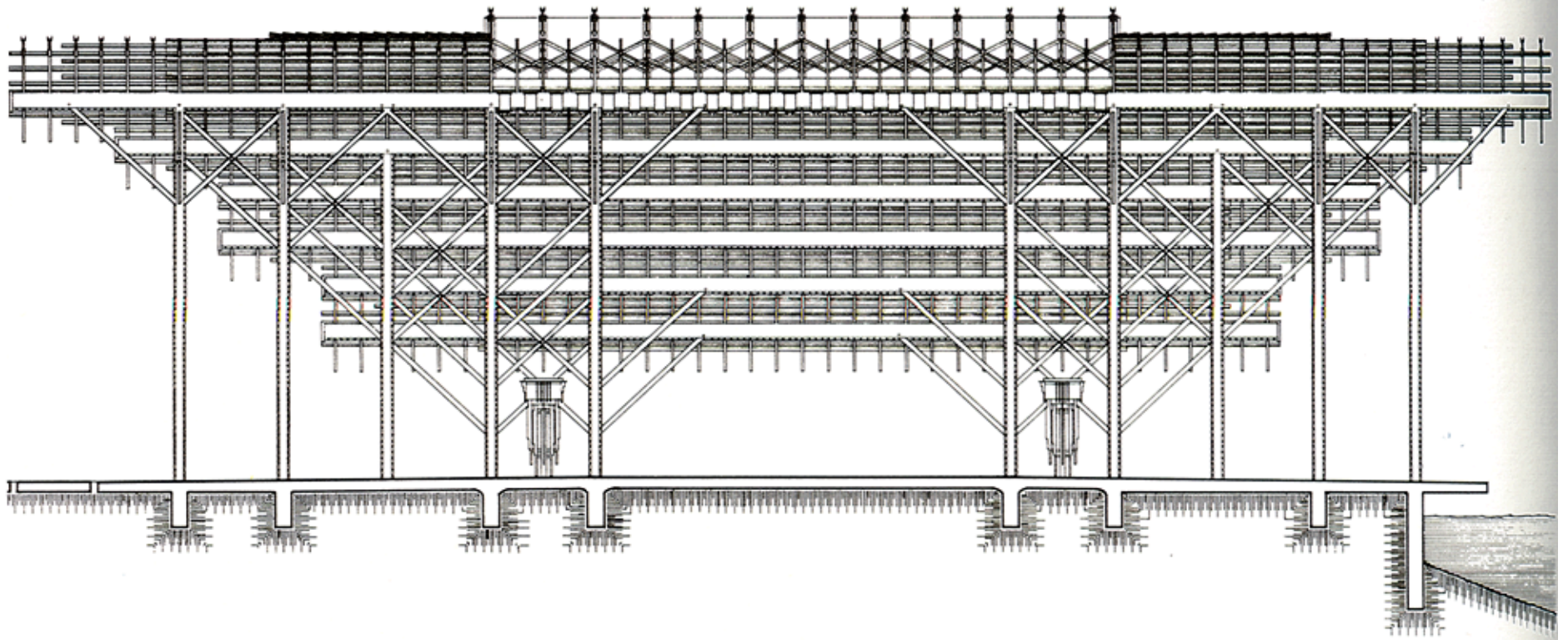




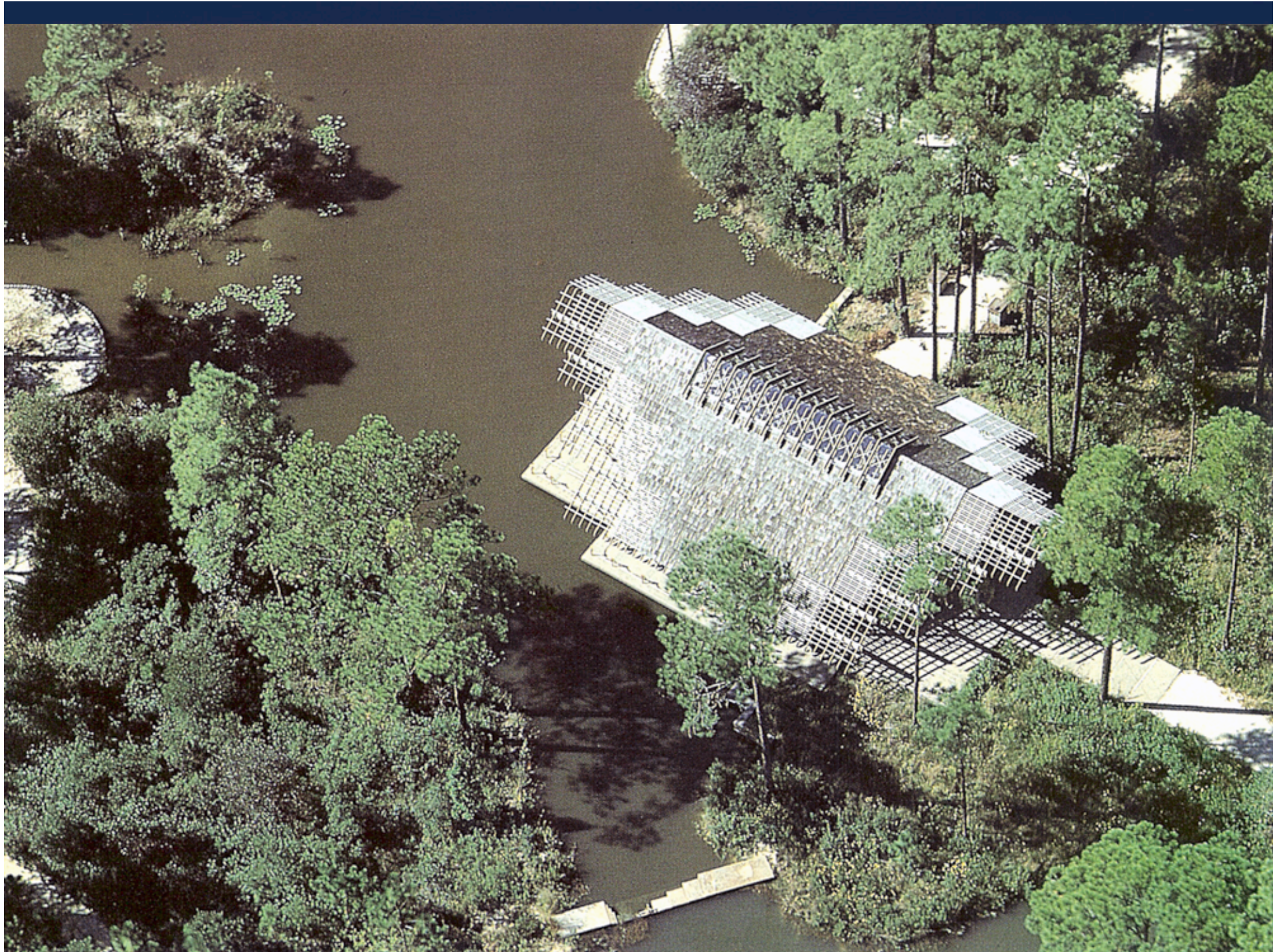








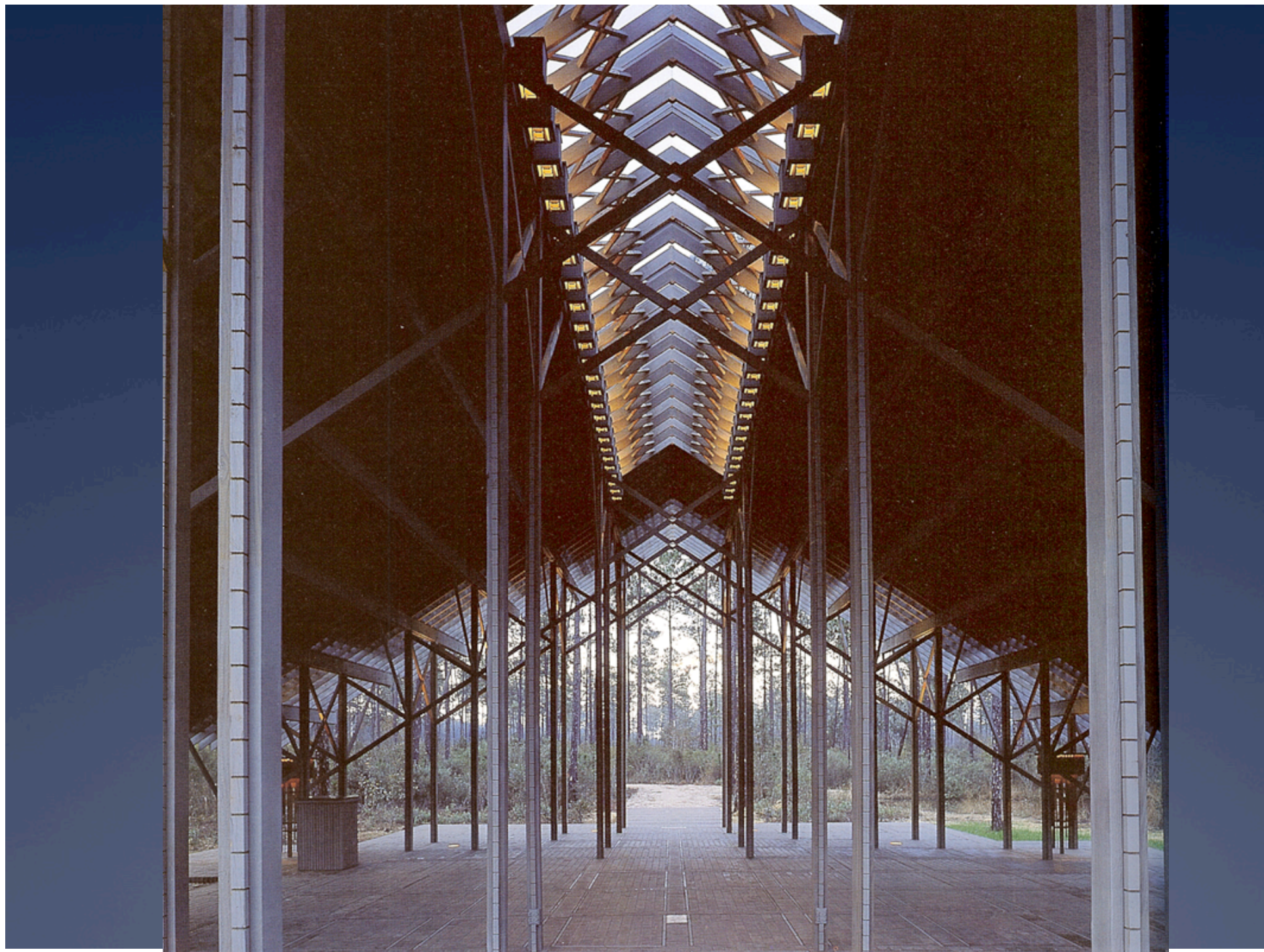




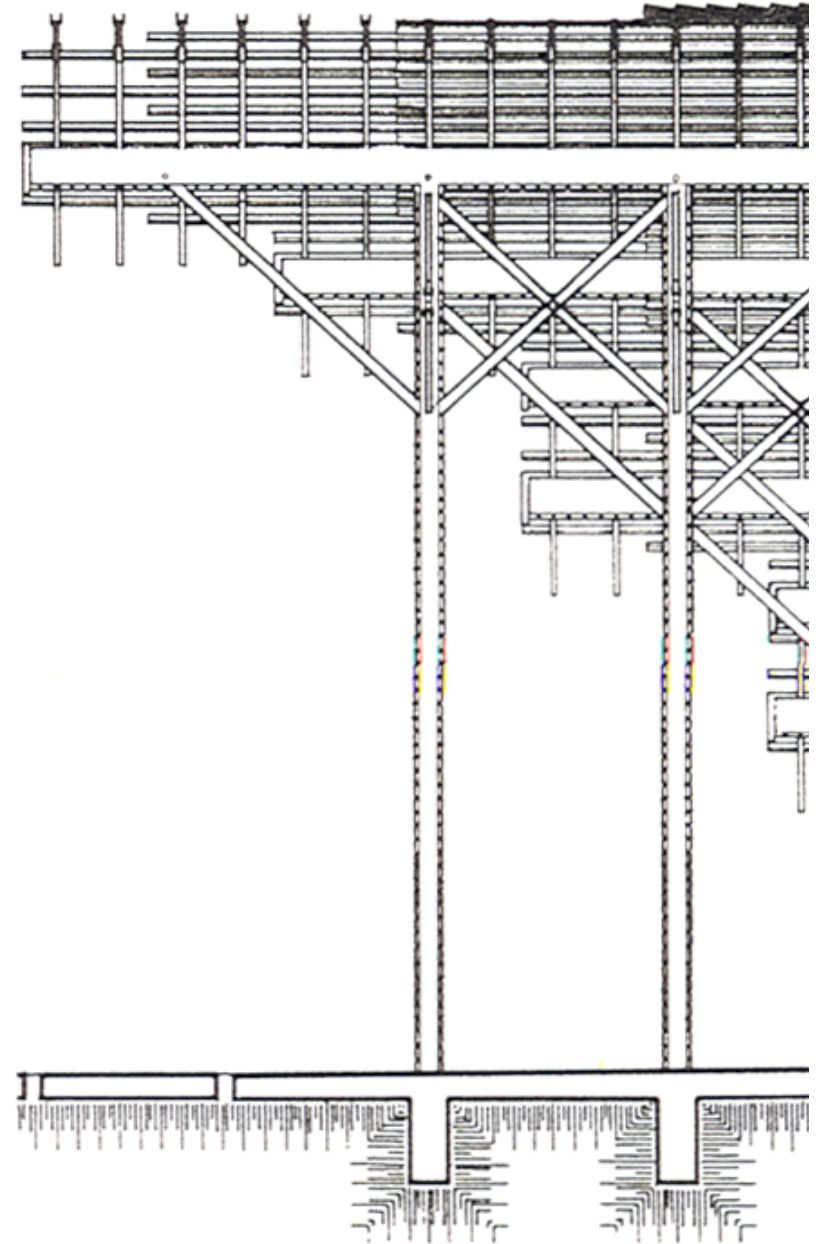




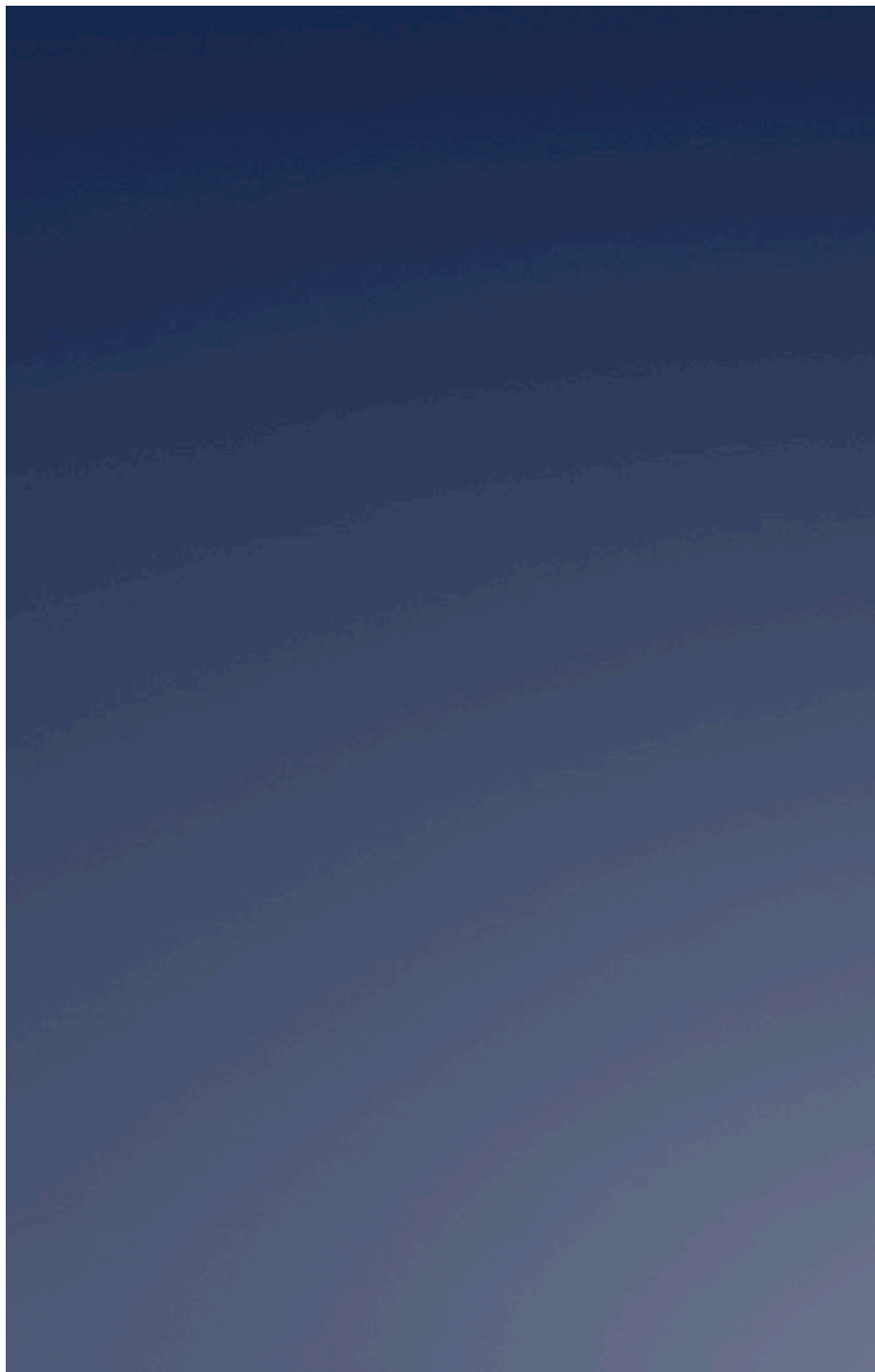












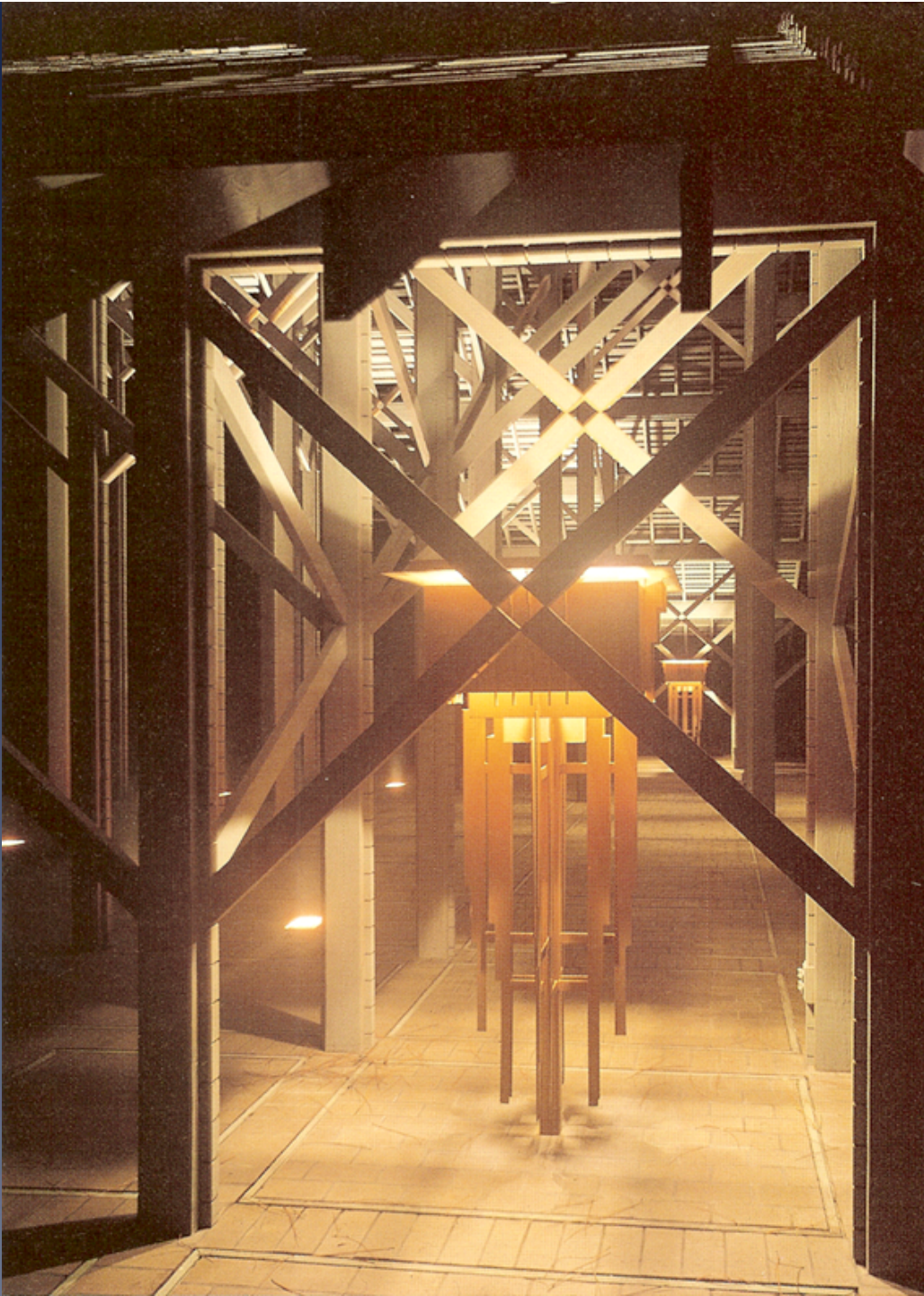














Pinecote Pavillion  
Crosby Arboretum  
Picayune, Mississippi

1987 Fay Jones





