

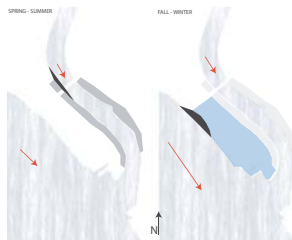


5TH YEAR THESIS

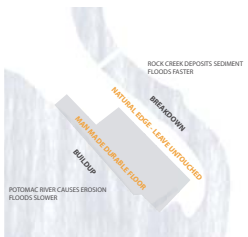
MANIFESTING THE UNMEASURABLE FORM THAT COMES FROM A ROWING CLUB
THROUGH A MEASURABLE DESIGN SPECIFIC TO SITE AND PERSON



SITE
 GEORGETOWN, VA > PENINSULA AT THE CRUX OF POTOMAC RIVER AND ROCK CREEK



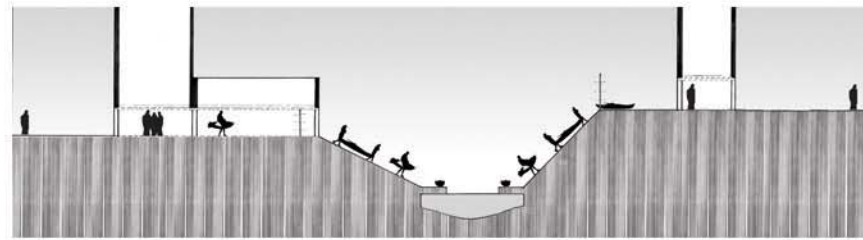
THE SITE IS SUBJECT TO FLOODING IN THE WINTER MONTHS UP TO 10 FEET
 THE CURRENT OF THE POTOMAC RIVER CAUSES EROSION
 WHILE THE SLOW FLOW OF ROCK CREEK DEPOSITS SEDIMENT
 THE FOLIAGE CHANGES THROUGHOUT THE YEAR



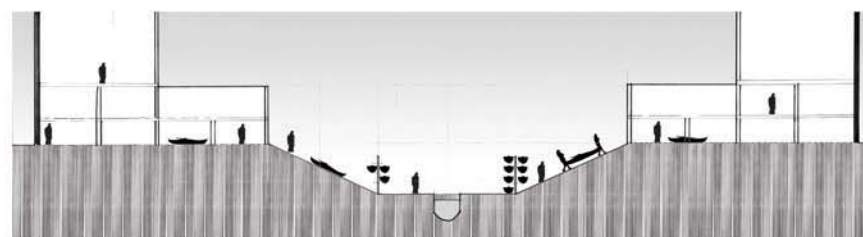
PERMANENCE IS PLANNED FOR BY PROVIDING TWO SIDES TO SITE
 FLOWING WITH THE NATURAL EROSION/BUILDUP OF THE SITE



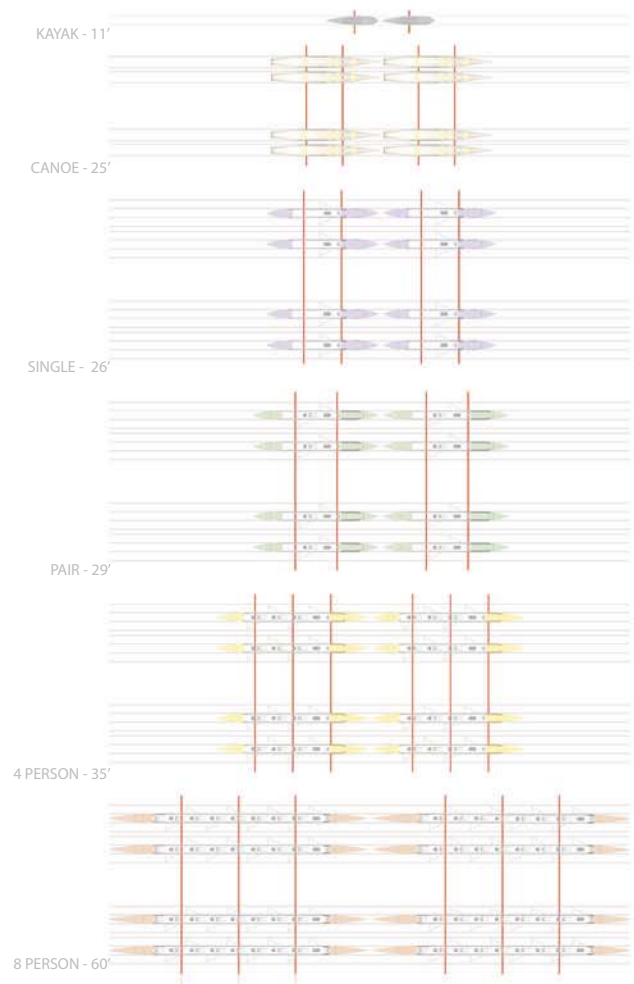
competitive rower circulation



recreational rower circulation



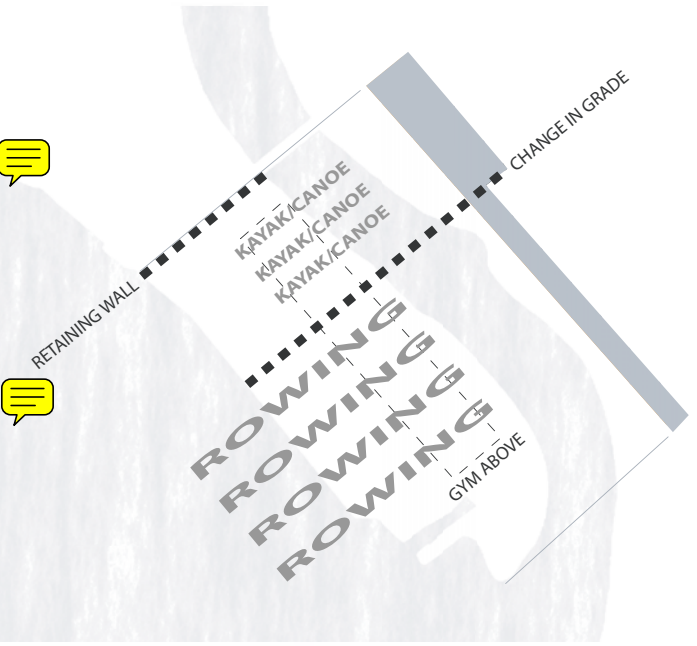
staff circulation

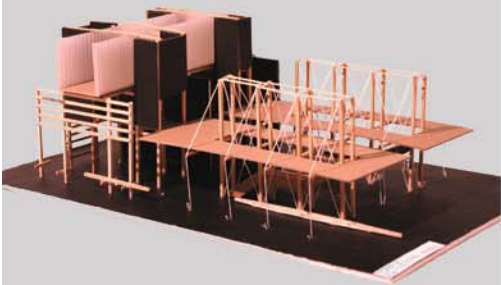
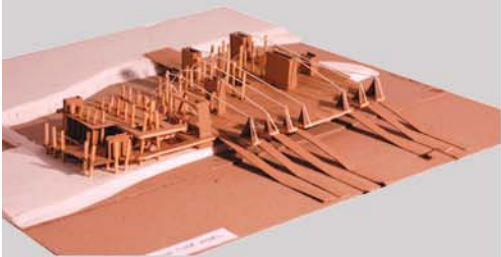
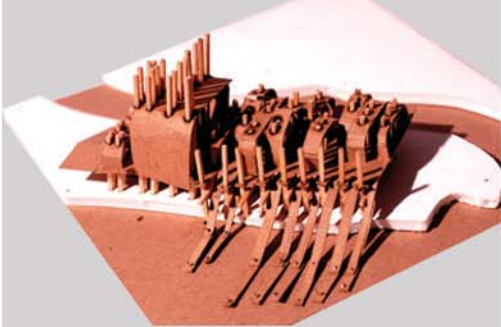


RECREATIONAL BOATER
 > GUIDE BOATER TO DESTINATION WITH ARRANGEMENT OF BOATS
 > BEACH-LIKE ENTRY INTO WATER
 > DURABLE CANOE AND KAYAKS
 > BOATS CAN BE STACKED AND CARRIED BY ONE HUMAN


COMPETITIVE BOATER
 > FAMILIARITY WITH SITE
 > AREA PRIVATE FOR TEAMS/STORAGE
 > EASIEST CIRCULATION TO WATER
 > BOATS DELICATE AND BEAUTIFUL!
 > CAN ONLY BE HANDLED BY MANY HUMANS
 > DELICATE CRAWLING OF BOAT FOR STORAGE

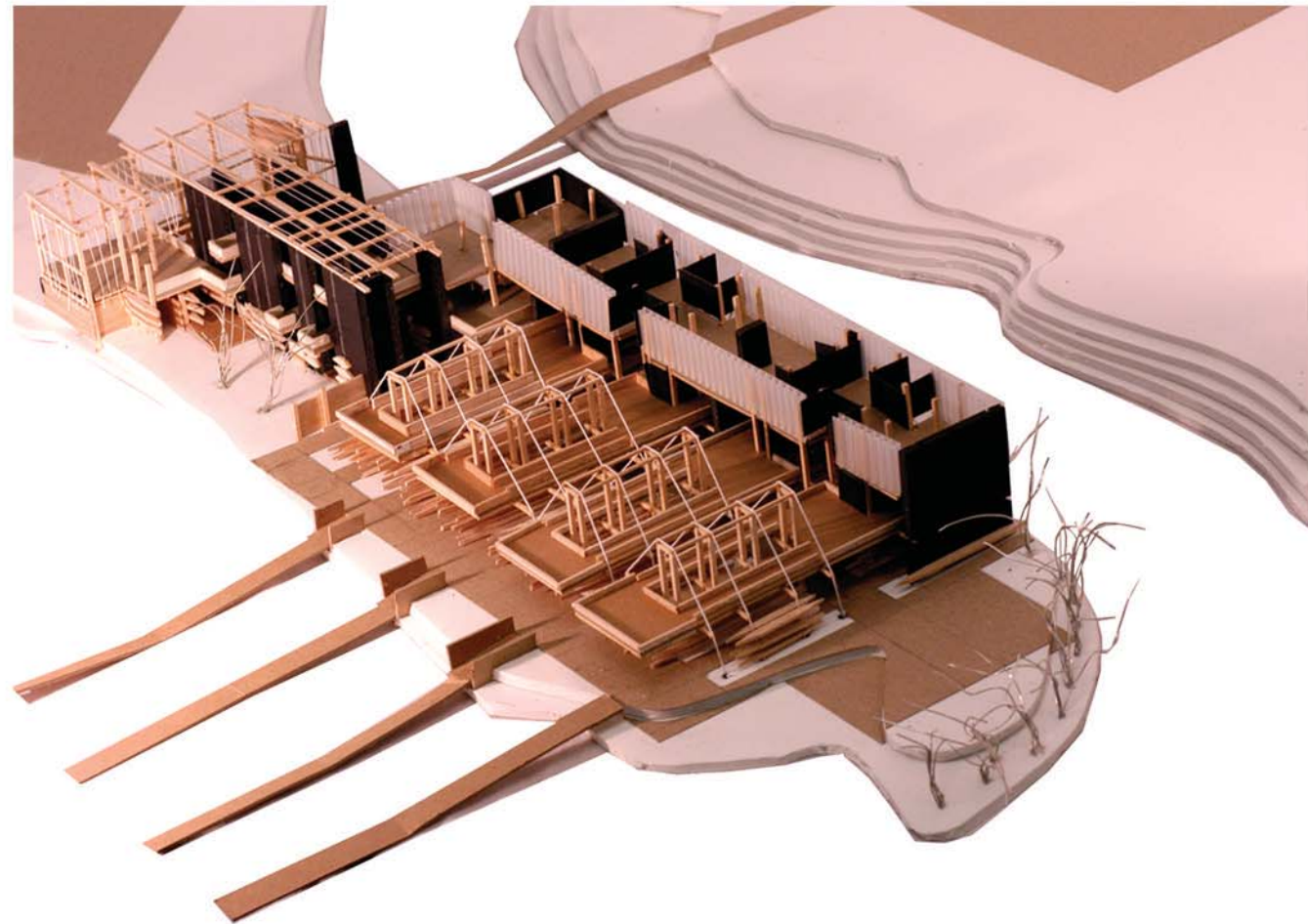
FITNESS MEMBERS
 > INTRODUCE YEAR-ROUND FUNCTION TO BRING LIFE TO SITE
 > GYM SPANS ABOVE
 > VISUAL CONNECTION WITH BOTH TYPES OF BOATERS
 > OPEN FOR INDOOR TRAINING AND PUBLIC USE

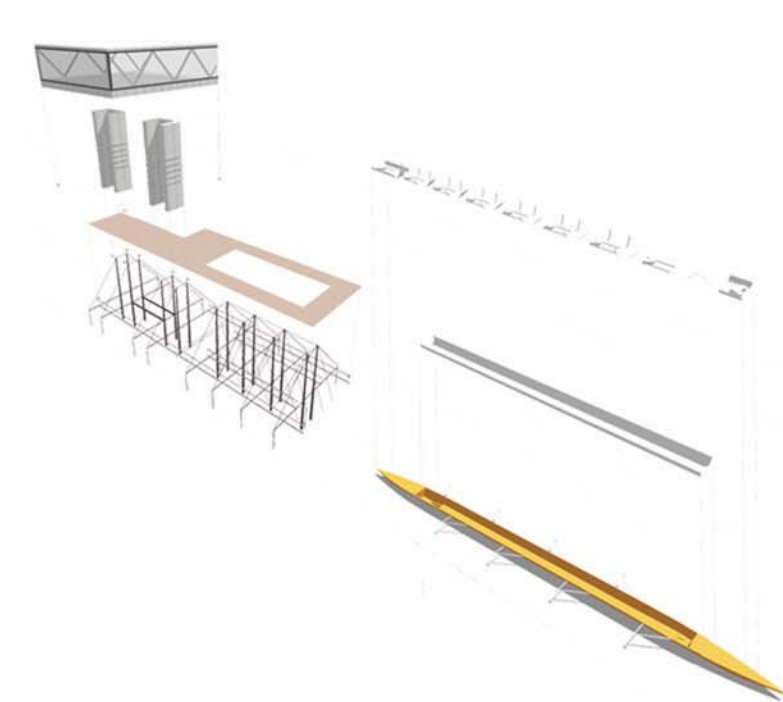




ONE LIVES AMONG THE BOATS
ALLOWING THEM TO INSPIRE AND GUIDE

TO RISE  AMONG THE BOATS
AND BE SUPPORTED BY THEIR INHERENT STRUCTURE

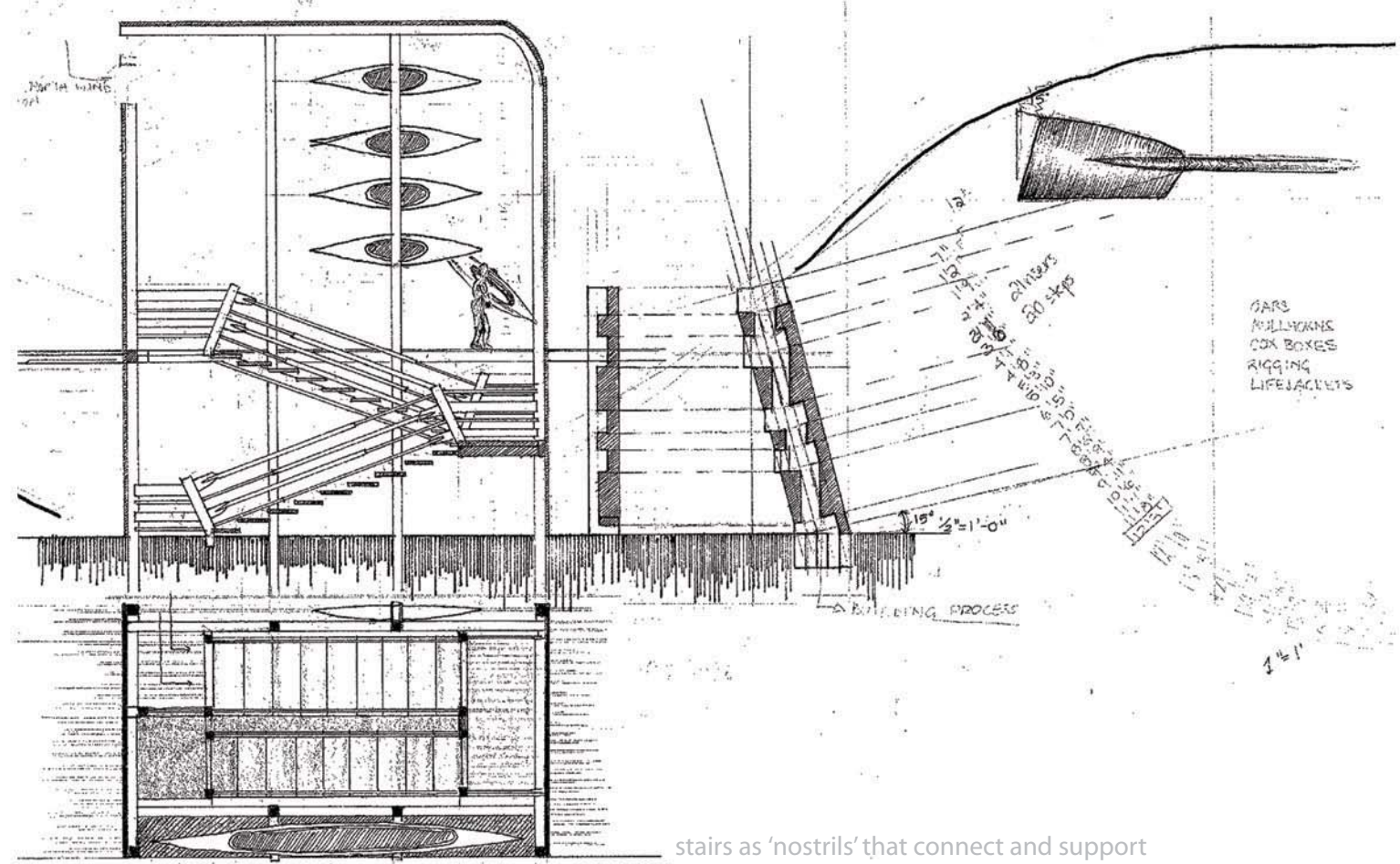




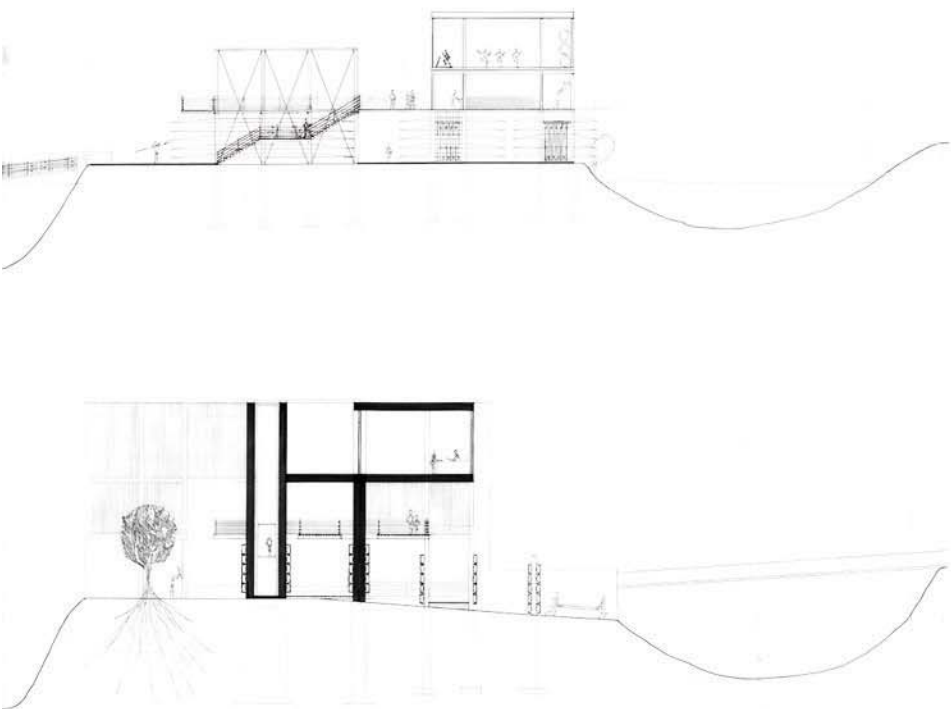
THE SKELETAL STRUCTURE IS DELICATE
MUCH LIKE THE SKIN OF A ROWING SHELL

WHILE THE DURABLE PIECES INSERTED
RESIST SHEAR IN ALL DIRECTIONS
AND CREATE A REALM FOR PEOPLE
TO LIVE BETWEEN THE BOATS

MUCH LIKE THE SEATS OF A ROWING SHELL



stairs as 'nostrils' that connect and support

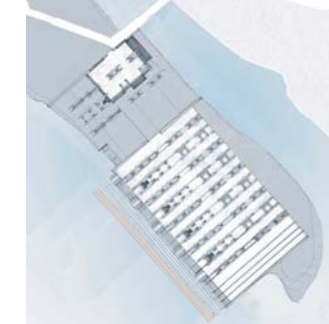


FITNESS REALM > VOLUMETRIC/SIMPLE
SUPPORTED BY BOAT RACK STRUCTURE
SPANS BOAT AND PEOPLE REALMS

PEOPLE FLOOR > DELICATE/SKELETAL
SUPPORTED BY BOAT RACK STRUCTURE
OAR INSPIRED RAILINGS

BOAT FLOOR > DURABLE
FLOODABLE
CHANNELS FOR WATER





boat realm



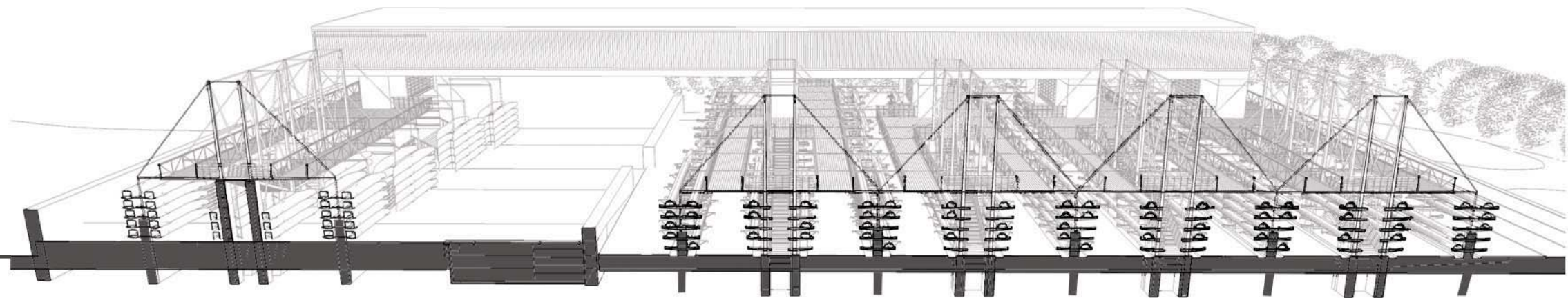
people realm



fitness realm

THIS PROJECT IS A SET OF ACTIONS TO FORM A CASUAL RELATIONSHIP BETWEEN BOAT AND PERSON
THE USE IS TO PROVIDE STORAGE/USE SPACE FOR COMPETITIVE AND RECREATIONAL BOATERS IN THE AREA
THE MAIN INTENTION IS TO FIND A CONNECTION BETWEEN THE DAILY LIFE OF A BOATER AND THE STRUCTURE THAT HOLDS THEM

to live among the boats

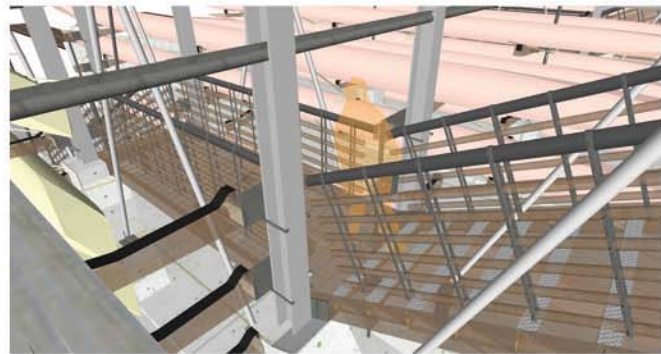




ROWING CLUB AS AN IMMATERIAL FORM:

STEMS FROM OUR
INHERENT WANT AS HUMAN BEINGS
TO BE PART OF A GROUP
TO BE PART OF A TEAM

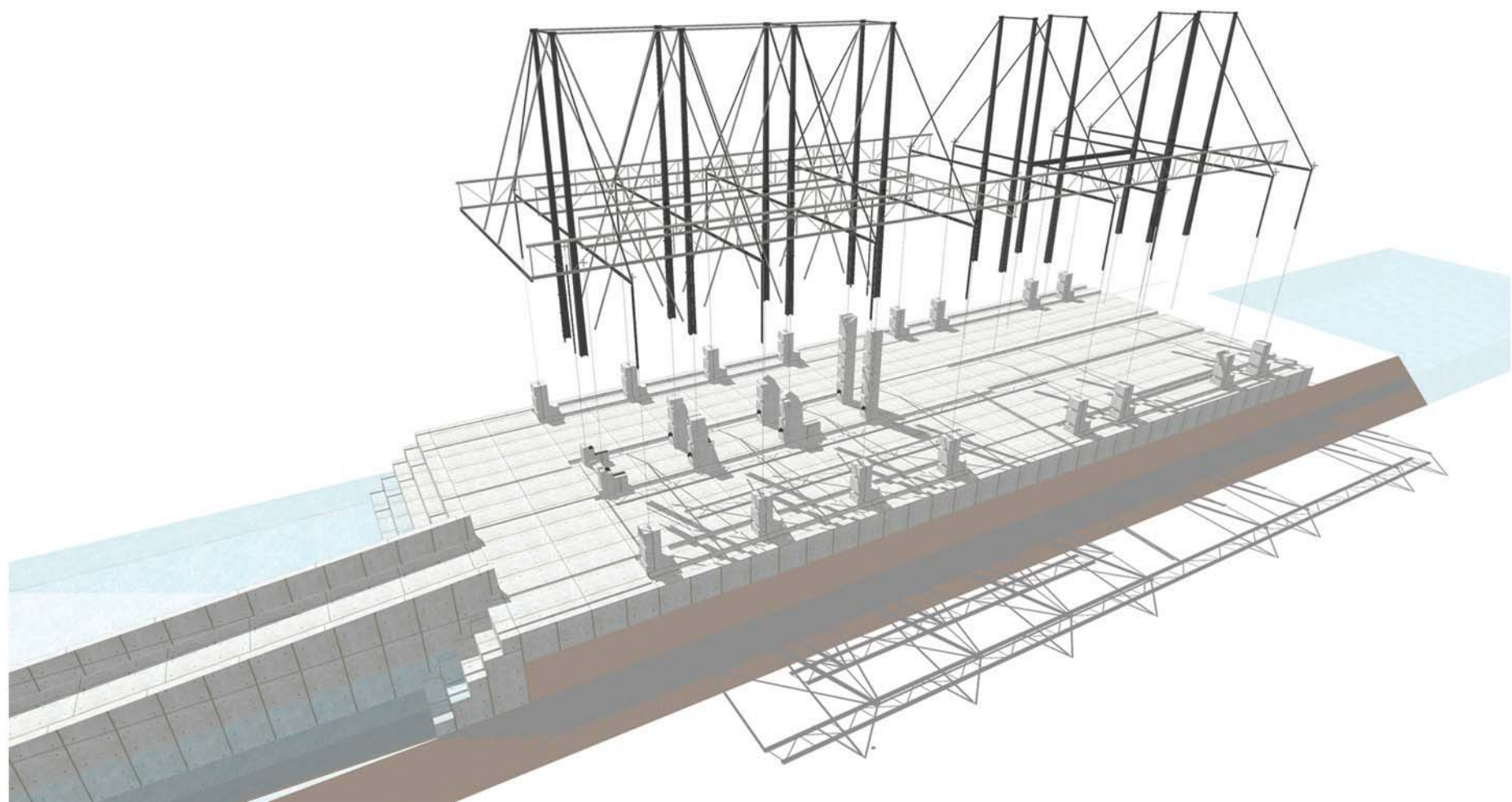
ROWING IS A DEDICATED SPORT WHERE
ONE BECOMES ONE WITH THE WATER:
THE SOUND OF THE LAPPING WATER
THE SMELL OF EARLY MORNING
THE SIGHT OF UNINHABITED WATER
THE TASTE OF SWEAT AND EXHERTION
THE TOUCH OF SMOOTH OARS

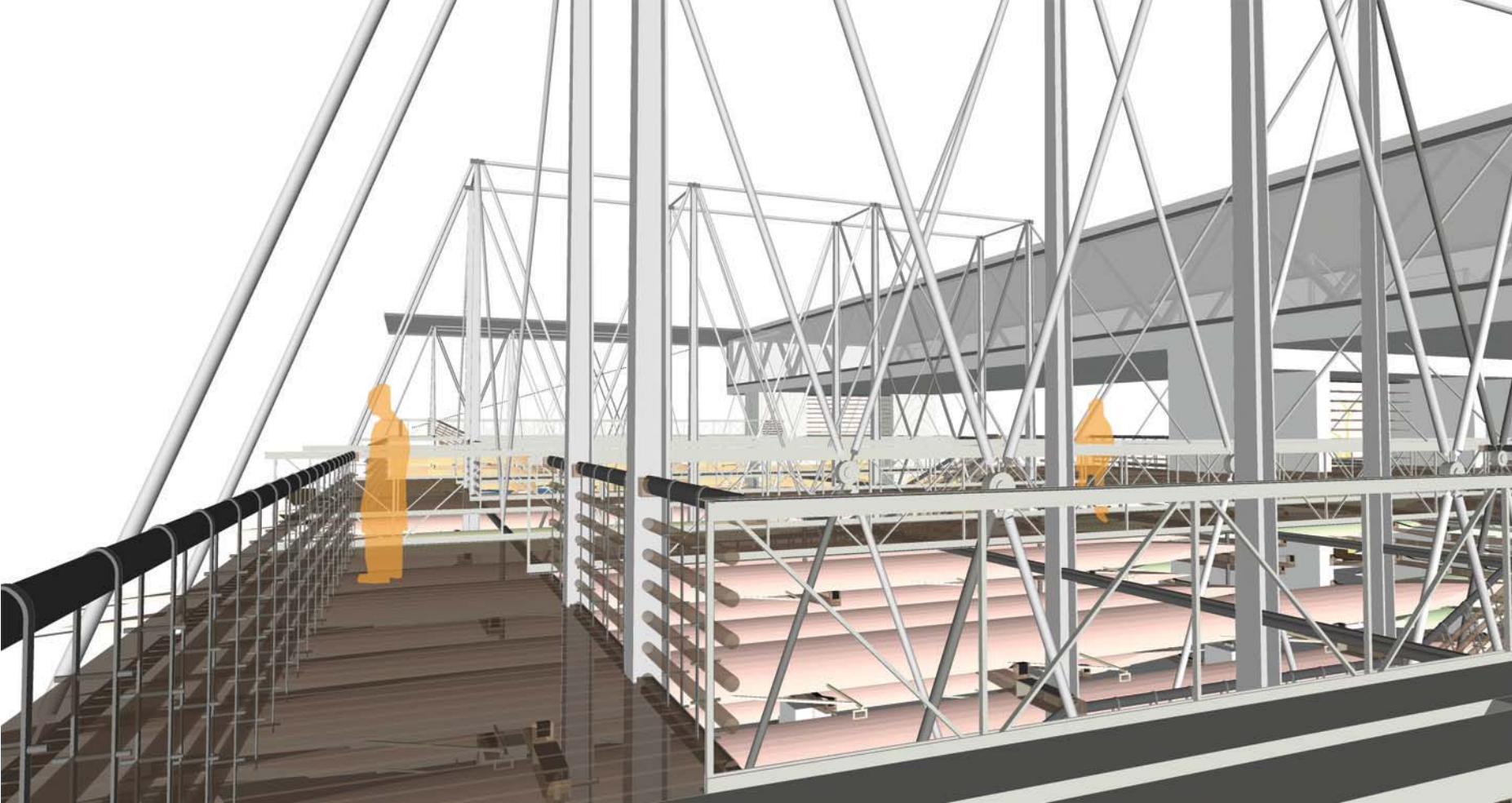


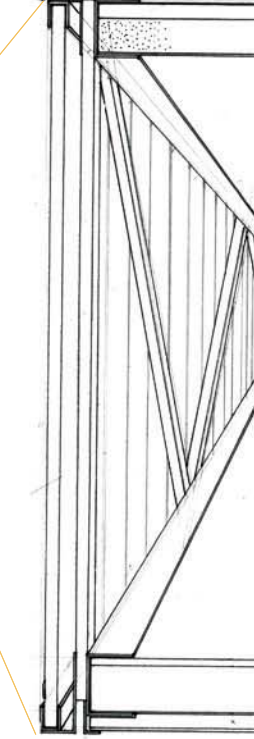
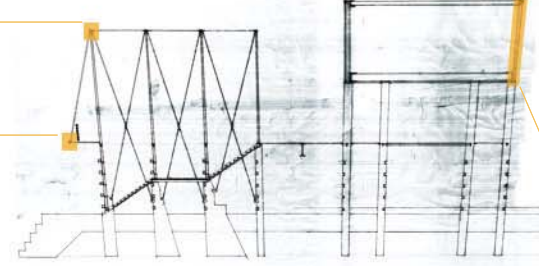
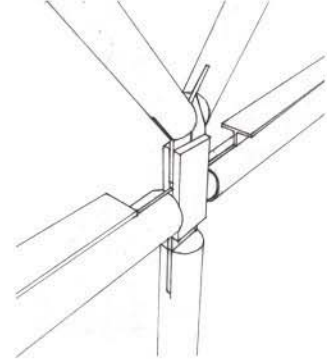
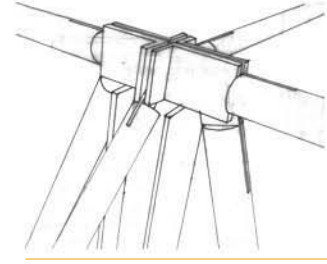
ROWING CLUB AS A MATERIAL DESIGN:

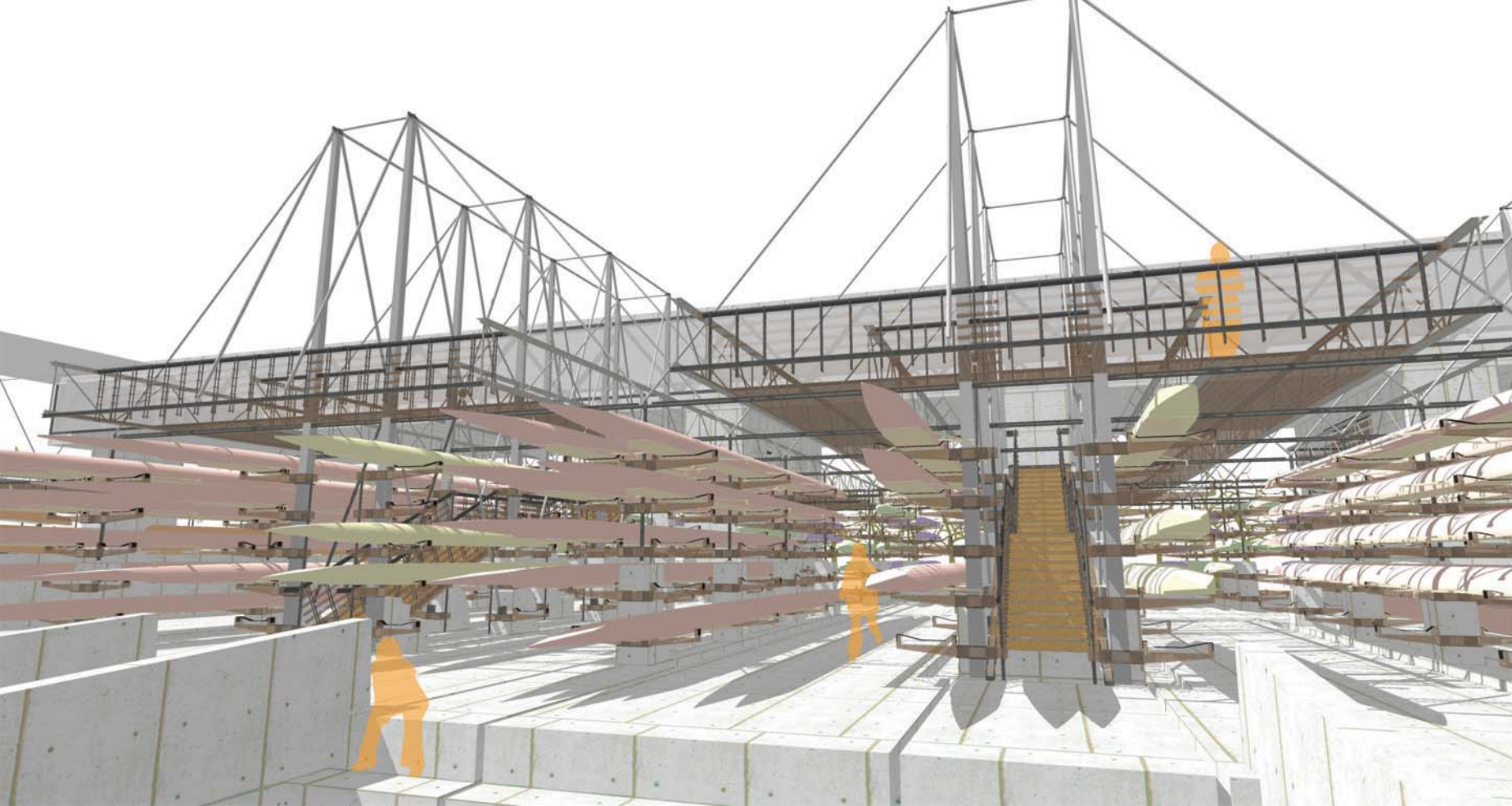
STEMS DIRECTLY FROM THE INHERENT
SCALE AND STRUCTURE OF THE ROWING SHELL

A STRONG DURABLE FLOOR
CAPABLE OF FLOODING
HOLDS A DELICATE STRUCTURE
WHO'S PRIMARY PURPOSE IS TO HOLD BOATS
AND IN TURN HOLD PEOPLE

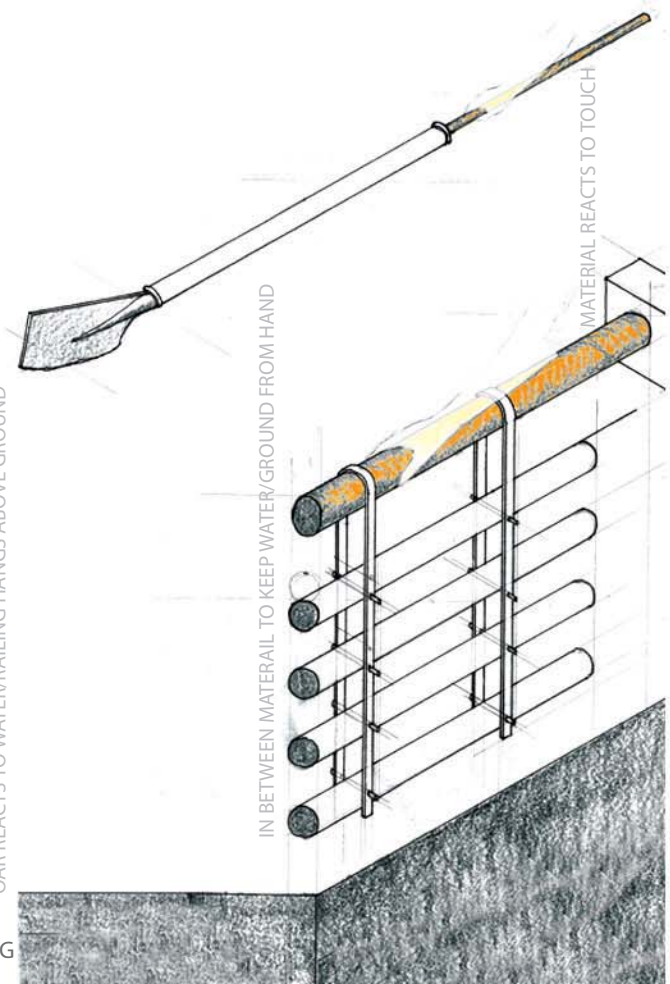






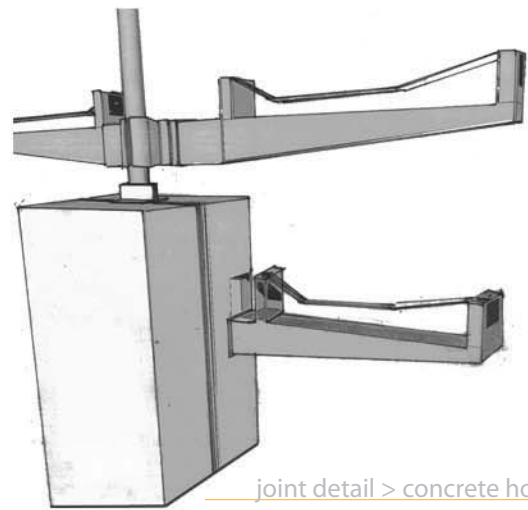


OUR REACTS TO WATER/RAILING HANGS ABOVE GROUND

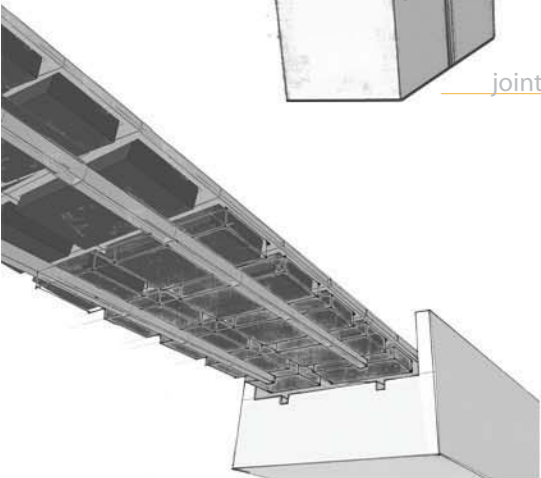


IN BETWEEN MATERIAL TO KEEP WATER/GROUND FROM HAND

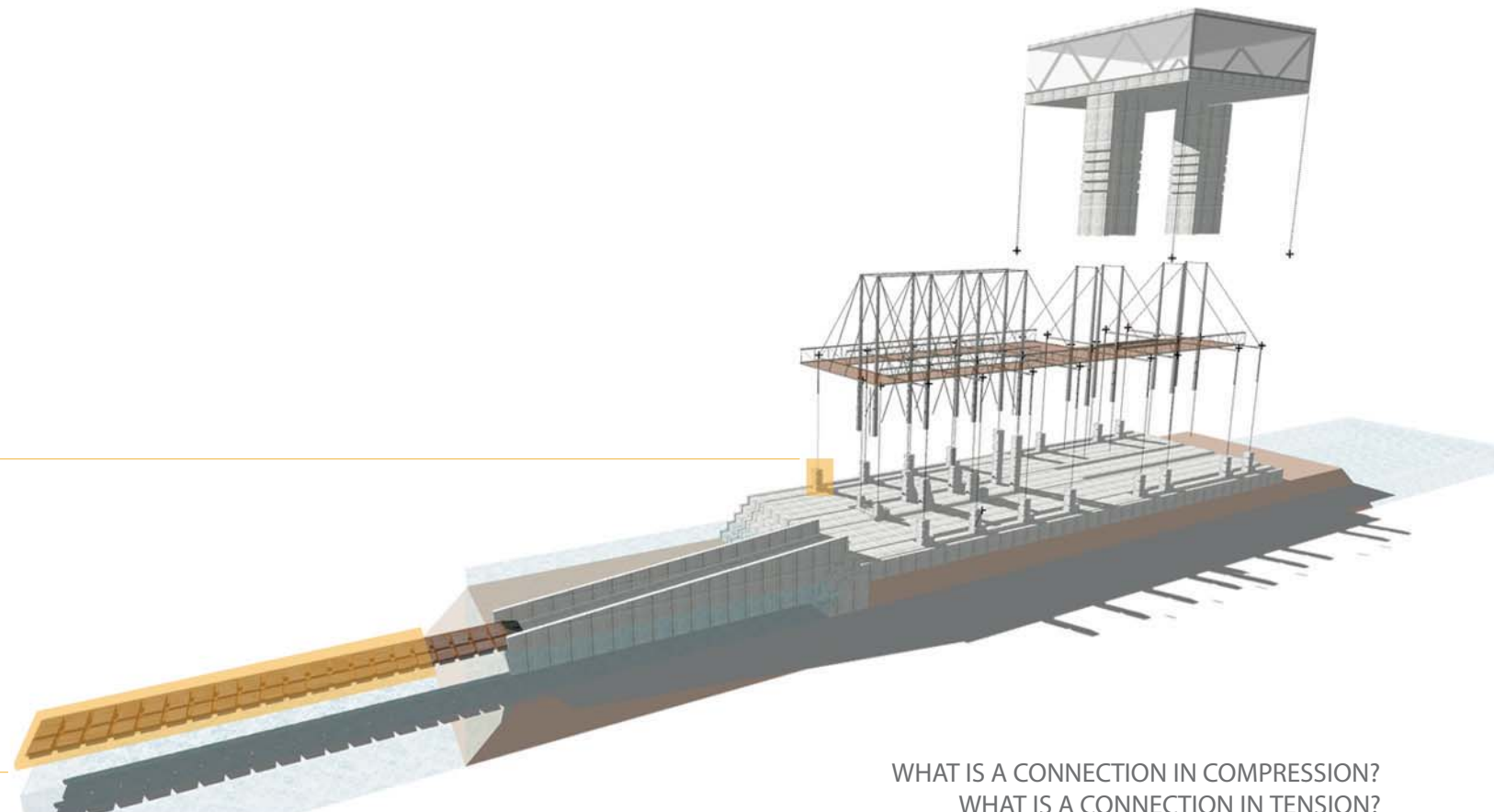
MATERIAL REACTS TO TOUCH



joint detail > concrete holds down steel in tension



dock slides onto durable concrete during winter freezing



WHAT IS A CONNECTION IN COMPRESSION?
WHAT IS A CONNECTION IN TENSION?



AN ARCHITECTURE OF CONNECTION

